

**Prepared for:**

BANKS ENVIRONMENTAL DATA, INC.  
1601 Rio Grande, Ste. 500  
Austin, TX 78701



# Regulatory Database Report

ASTM E1527-05/AAI Compliant  
Commercial Property  
Houston, TX 77007  
Harris County  
ES-10000

**Table of Contents** *Commercial Property*

<b>Geographic Summary</b>	<b>3</b>
<b>Database Summary</b>	<b>4</b>
<b>Maps</b>	
<b>Summary Map - 0.25 Mile Radius</b>	<b>5</b>
<b>Summary Map - 0.5 Mile Radius</b>	<b>6</b>
<b>Summary Map - 1 Mile Radius</b>	<b>7</b>
<b>Topographic Overlay Map - 1 Mile Radius</b>	<b>8</b>
<b>Current Imagery Overlay Map - 0.5 Mile Radius</b>	<b>9</b>
<b>Soils Sub-Report</b>	
<b>Soil Survey Map - 0.1 Mile Radius</b>	<b>10</b>
<b>Soils Details</b>	<b>11</b>
<b>Soils Definitions</b>	<b>12</b>
<b>Water &amp; Oil/Gas Wells Sub-Report</b>	
<b>Water &amp; Oil/Gas Wells Map - 0.25 Mile Radius</b>	<b>13</b>
<b>Water &amp; Oil/Gas Wells Details</b>	<b>14</b>
<b>Sites Summary</b>	
<b>Mapped Sites Summary</b>	<b>15</b>
<b>Unmapped Sites Summary</b>	<b>16</b>
<b>Zip Code Map - 1 Mile Radius</b>	<b>17</b>
<b>Sites Details</b>	
<b>Mapped Sites Details</b>	<b>18</b>
<b>Federal &amp; State Database Definitions and Sources</b>	<b>62</b>
<b>Disclaimer</b>	<b>65</b>

**Geographic Summary** *Commercial Property***Location**

Texas

**Coordinates**

<b>Longitude &amp; Latitude in Degrees Minutes Seconds</b>	-95° 22' 28", 29° 46' 32"
<b>Longitude &amp; Latitude in Decimal Degrees</b>	-95.374472°, 29.775616°
<b>X and Y in UTM</b>	270440.68, 3296285.29 (Zone 15)

**Elevation**

Target Property lies 46.82 feet above sea level.

**Zip Codes Searched**

<b>Search Distance</b>	<b>Zip Codes</b>
<b>Target Property</b>	77007, 77201
<b>0.25 miles</b>	77007, 77201, 77009
<b>0.5 miles</b>	77007, 77201, 77009
<b>1 mile</b>	77002, 77201, 77007, 77201, 77009, 77019

**Topos Searched**

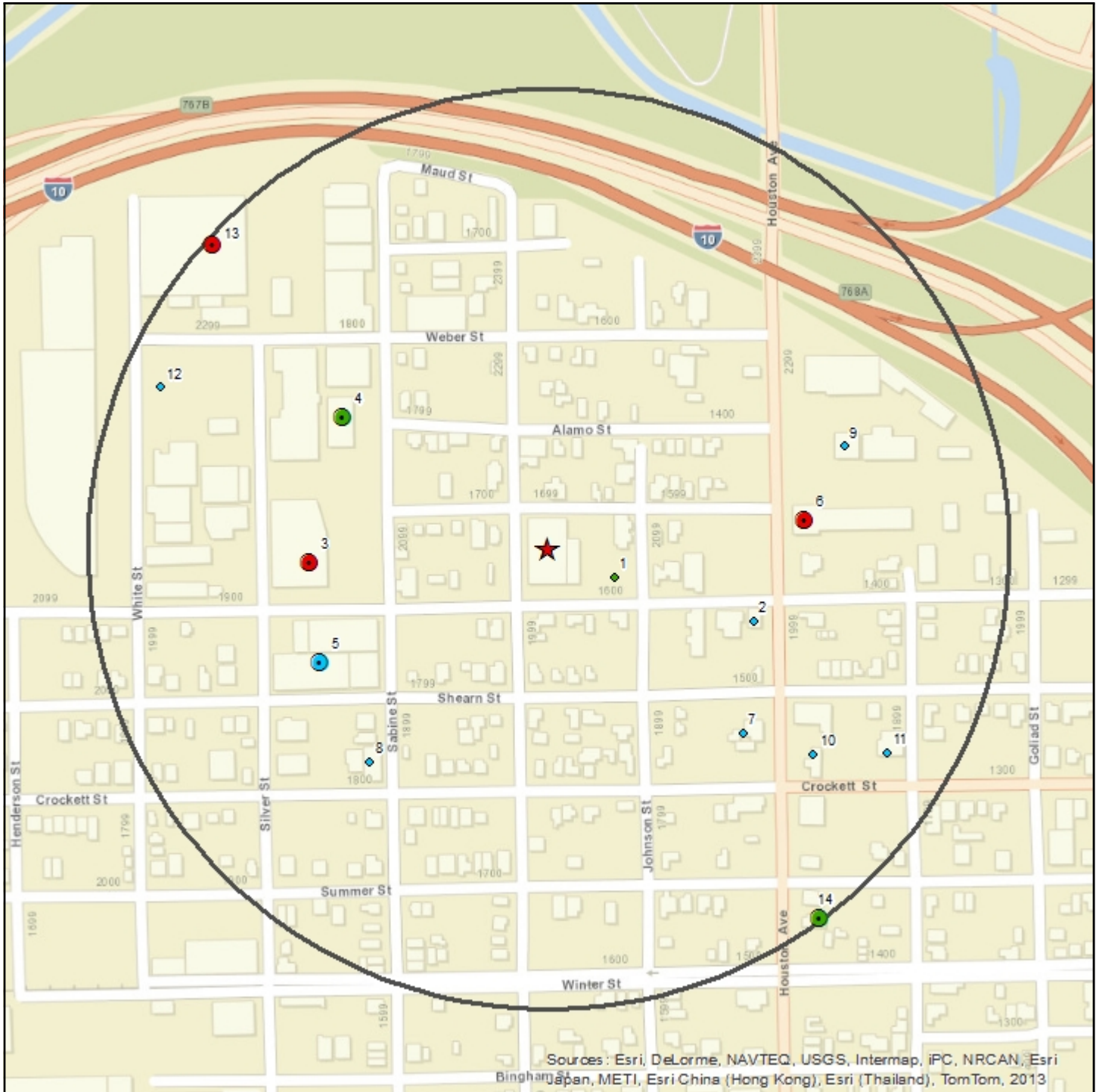
<b>Search Distance</b>	<b>Topo Name</b>
<b>Target Property</b>	Settegast
<b>0.25 miles</b>	Houston Heights, Settegast
<b>0.5 miles</b>	Houston Heights, Settegast
<b>1 mile</b>	Houston Heights, Settegast

# Database Summary *Commercial Property*



Databases Searched	Distance Searched	# Mapped	# Not Mapped	Total
<b>Federal - ASTM 1527-05/AAI Required</b>				
National Priority List (NPL)	1	0	0	0
Delisted National Priority List (DNPL)	0.5	0	0	0
CERCLIS (CER)	0.5	0	0	0
CERCLIS NFRAP (CER NFRAP)	0.5	1	0	1
RCRA CORRACTS (RCRA COR)	1	0	0	0
RCRA non-CORRACTS TSD (RCRA TSD)	0.5	0	0	0
RCRA Generators (RCRA GEN)	0.25	1	0	1
Federal Brownfields (FED BWN)	0.5	1	0	1
Federal Institutional Control (FED IC)	0.5	0	0	0
Federal Engineering Control (FED EC)	0.5	0	0	0
ERNS List (ERNS)	0.25	1	0	1
<b>State - ASTM 1527-05/AAI Required</b>				
State/Tribal Equivalent NPL (ST NPL)	1	1	0	1
State/Tribal Equivalent CERCLIS (ST CER)	0.5	0	0	0
State/Tribal Disposal or Landfill (SWLF)	0.5	0	0	0
State/Tribal Leaking Storage Tank (LPST)	0.5	14	0	14
State/Tribal Storage Tank (PST)	0.25	8	0	8
State/Tribal Institutional Control (ST IC)	0.25	0	0	0
State/Tribal Engineering Control (ST EC)	0.5	0	0	0
State/Tribal Voluntary Cleanup (VCP)	0.5	8	0	8
State/Tribal Brownfield (ST BWN)	0.5	0	0	0
State/Tribal Hazardous Waste (HW)	0.25	3	0	3
<b>Non-ASTM/AAI Required Databases</b>				
RCRA (RCRA)	0.25	2	0	2
Dry Cleaners (DRYC)	0.25	0	0	0
<b>Total Sites Found</b>		<b>40</b>	<b>0</b>	<b>40</b>

# Summary Map - 0.25 Mile Radius



## Commercial Property

- |             |              |             |                               |
|-------------|--------------|-------------|-------------------------------|
| Single Site | Cluster Site | Large Tract | Cluster Site with Large Tract |
| Single Site | Cluster Site | Large Tract | Cluster Site with Large Tract |
| Single Site | Cluster Site | Large Tract | Cluster Site with Large Tract |
- RCRA COR, RCRA TSD, CER, LPST, NPL, ST NPL, SWLF*  
*RCRA GEN, ST & FED BWN, ST & FED EC, ST & FED IC, DNPL, CER NFRAP, PST, VCP, ST CER*  
*ERNS, HW, RCRA, DRYC*

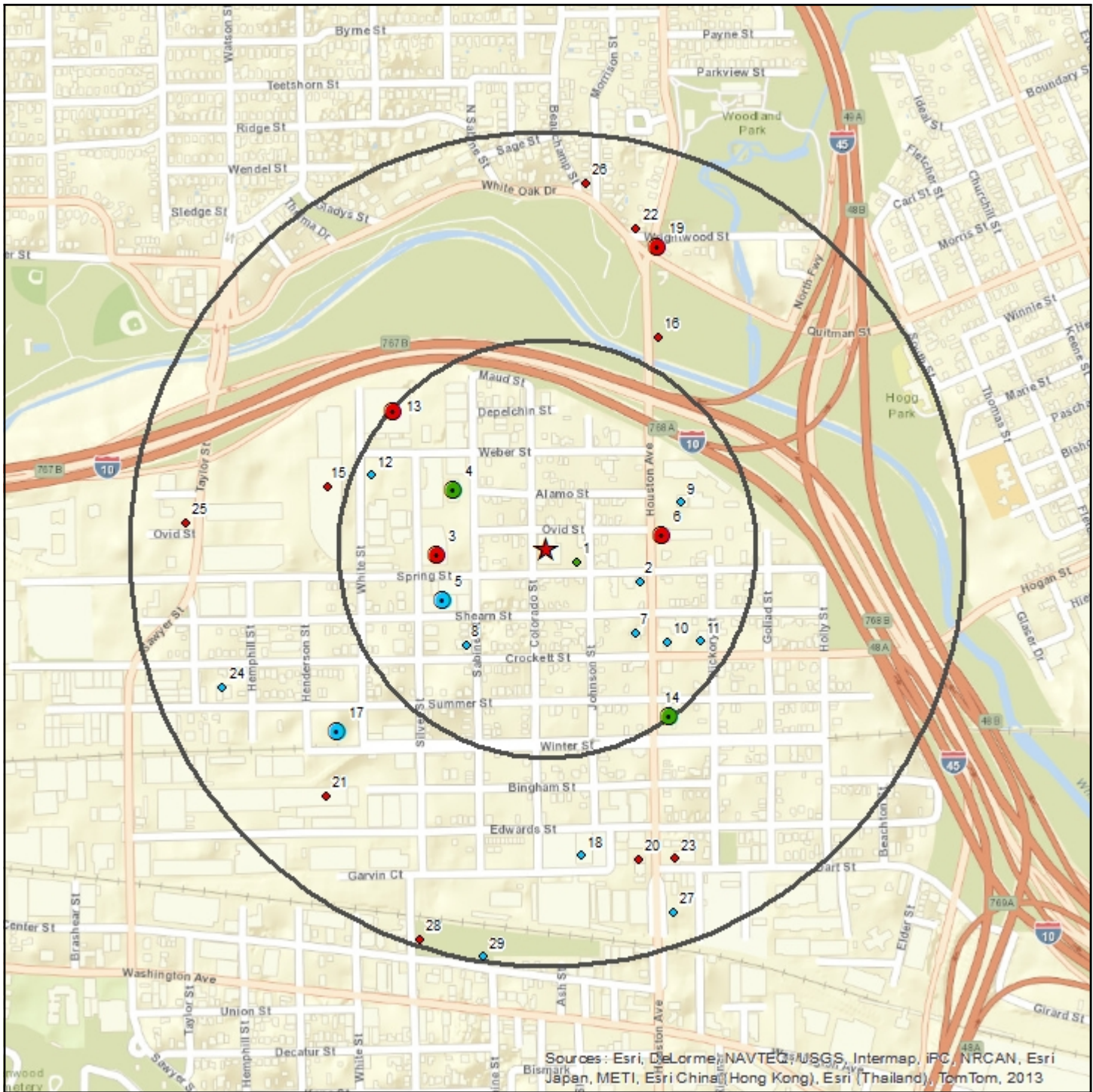
- Target Property
- Search Buffer

1 : 5,000

Lambert Conformal Conic Projection  
 1983 North American Datum  
 First Standard Parallel: 33° 00' North  
 Second Standard Parallel: 45° 00' North  
 Central Meridian: 96° 00' West  
 Latitude of Origin: 39° 00' North



# Summary Map - 0.5 Mile Radius



Sources: Esri, DeLorme, NAVTEQ, USGS, Intermap, iFC, NRCAN, Esri Japan, METI, Esri China (Hong Kong), Esri (Thailand), TomTom, 2013

## Commercial Property

- |             |              |             |                               |
|-------------|--------------|-------------|-------------------------------|
| Single Site | Cluster Site | Large Tract | Cluster Site with Large Tract |
| Single Site | Cluster Site | Large Tract | Cluster Site with Large Tract |
| Single Site | Cluster Site | Large Tract | Cluster Site with Large Tract |
- RCRA COR, RCRA TSD, CER, LPST, NPL, ST NPL, SWLF*  
*RCRA GEN, ST & FED BWN, ST & FED EC, ST & FED IC, DNPL, CER NFRAP, PST, VCP, ST CER*  
*ERNS, HW, RCRA, DRYC*

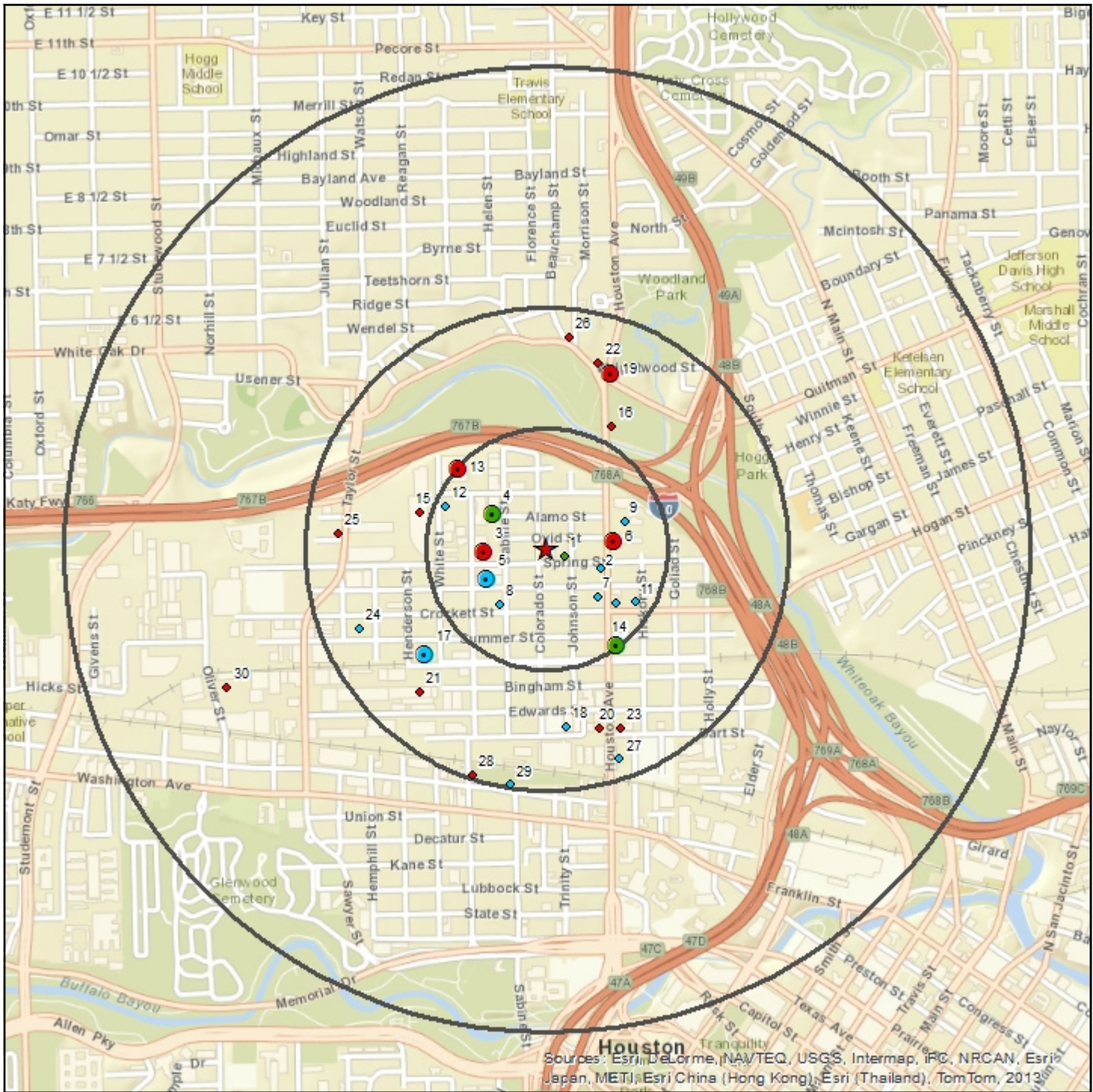
- Target Property
- Search Buffer

1 : 11,000

Lambert Conformal Conic Projection  
 1983 North American Datum  
 First Standard Parallel: 33° 00' 00" North  
 Second Standard Parallel: 45° 00' 00" North  
 Central Meridian: 96° 00' 00" West  
 Latitude of Origin: 39° 00' 00" North



# Summary Map - 1 Mile Radius



Sources: Esri, DeLorme, NAVTEQ, USGS, Intermap, iPC, NRCAN, Esri Japan, METI, Esri China (Hong Kong), Esri (Thailand), TomTom, 2013

## Commercial Property

- |             |              |             |                               |                 |
|-------------|--------------|-------------|-------------------------------|-----------------|
| Single Site | Cluster Site | Large Tract | Cluster Site with Large Tract | Target Property |
| Single Site | Cluster Site | Large Tract | Cluster Site with Large Tract | Search Buffer   |
| Single Site | Cluster Site | Large Tract | Cluster Site with Large Tract |                 |

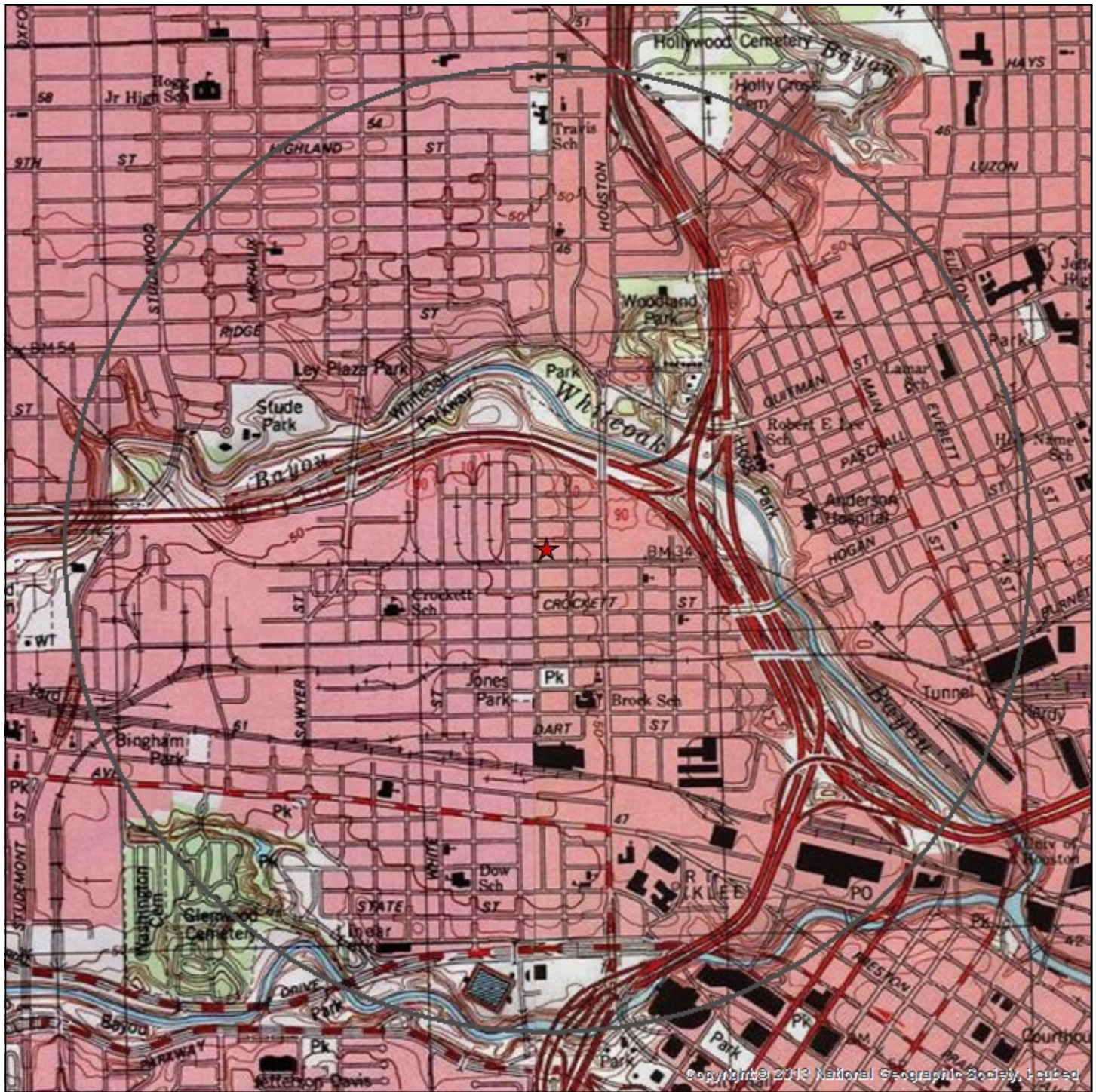
RCRA COR, RCRA TSD, CER, LPST, NPL, ST NPL, SWLF  
 RCRA GEN, ST & FED BWN, ST & FED EC, ST & FED IC, DNPL, CER NFRAP, PST, VCP, ST CER  
 ERNS, HW, RCRA, DRYC

1 : 19,000

Lambert Conformal Conic Projection  
 1983 North American Datum  
 First Standard Parallel: 33° 00' 00" North  
 Second Standard Parallel: 45° 00' 00" North  
 Central Meridian: 96° 00' 00" West  
 Latitude of Origin: 39° 00' 00" North





# Topographic Overlay Map - 1 Mile Radius



Copyright © 2013 National Geographic Society, Inc.

## Commercial Property

-  Target Property
-  Search Buffer

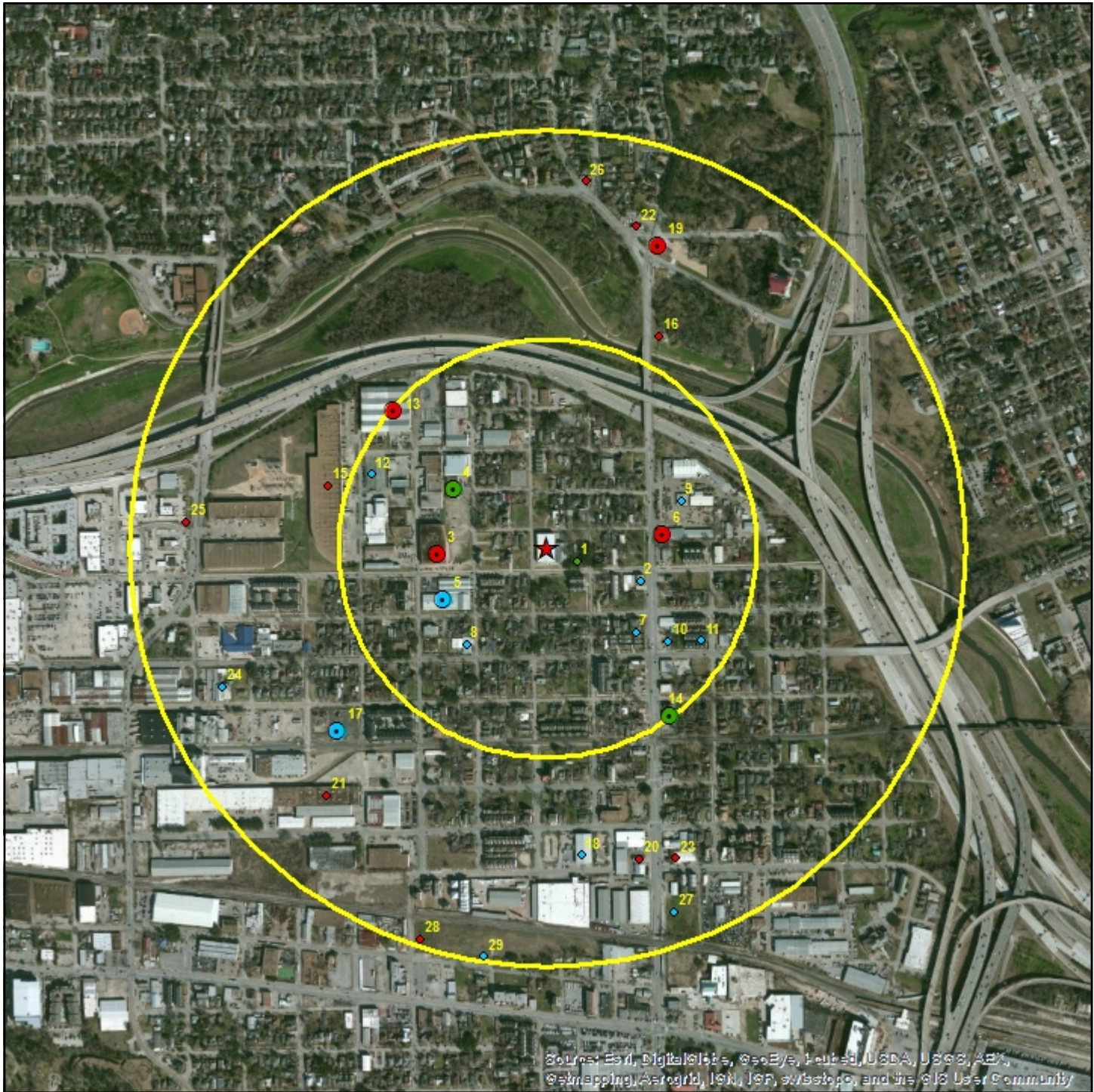
1 : 19,000



Lambert Conformal Conic Projection  
 1983 North American Datum  
 First Standard Parallel: 33° 00' North  
 Second Standard Parallel: 45° 00' North  
 Central Meridian: 96° 00' West  
 Latitude of Origin: 39° 00' North



# Current Imagery Overlay Map - 0.5 Mile Radius



Source: Esri, DigitalGlobe, GeoEye, Helios, USDA, USGS, Aero, @swmapping, Aerogrid, IGN, IGP, swbtopo, and the GIS User Community

## Commercial Property

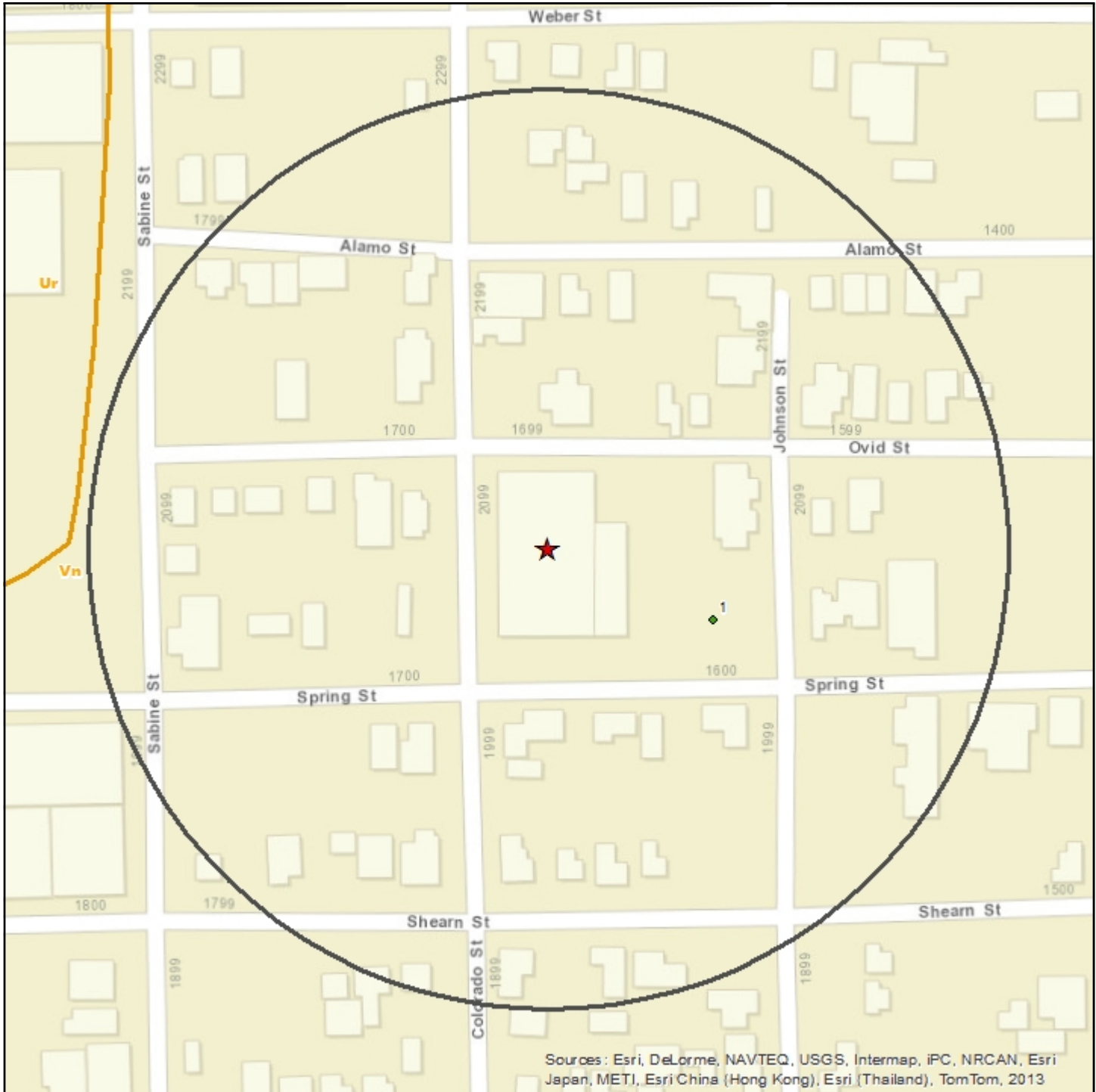
- |             |              |             |                               |                 |
|-------------|--------------|-------------|-------------------------------|-----------------|
| Single Site | Cluster Site | Large Tract | Cluster Site with Large Tract | Target Property |
| Single Site | Cluster Site | Large Tract | Cluster Site with Large Tract | Search Buffer   |
| Single Site | Cluster Site | Large Tract | Cluster Site with Large Tract |                 |
- RCRA COR, RCRA TSD, CER, LPST, NPL, ST NPL, SWLF*  
*RCRA GEN, ST & FED BWN, ST & FED EC, ST & FED IC, DNPL, CER NFRAP, PST, VCP, ST CER*  
*ERNS, HW, RCRA, DRYC*

1 : 11,000

Lambert Conformal Conic Projection  
 1983 North American Datum  
 First Standard Parallel: 33° 0' 00" North  
 Second Standard Parallel: 45° 0' 00" North  
 Central Meridian: 96° 0' 00" West  
 Latitude of Origin: 39° 0' 00" North



# Soil Survey Map - 0.1 Mile Radius



Sources: Esri, DeLorme, NAVTEQ, USGS, Intermap, iPC, NRCAN, Esri Japan, METI, Esri China (Hong Kong), Esri (Thailand), TomTom, 2013

## Commercial Property

- |  |              |             |                               |
|--|--------------|-------------|-------------------------------|
| Single Site  | Cluster Site | Large Tract | Cluster Site with Large Tract |
| <i>RCRA COR, RCRA TSD, CER, LPST, NPL, ST NPL, SWLF</i>  |              |             |                               |
| Single Site  | Cluster Site | Large Tract | Cluster Site with Large Tract |
| <i>RCRA GEN, ST &amp; FED BWN, ST &amp; FED EC, ST &amp; FED IC, DNPL, CER NFRAP, PST, VCP, ST CER</i> |              |             |                               |
| Single Site  | Cluster Site | Large Tract | Cluster Site with Large Tract |
| <i>ERNS, HW, RCRA, DRYC</i>  |              |             |                               |

- Target Property
- Search Buffer
- Soils Boundary

1 : 2,000



Lambert Conformal Conic Projection  
 1983 North American Datum  
 First Standard Parallel: 33° 00' North  
 Second Standard Parallel: 45° 00' North  
 Central Meridian: 96° 00' West  
 Latitude of Origin: 39° 00' North

**Soils** Commercial Property



**Soils Types Found**

Target Property	Vn
Within 0.1 miles of Target Property	Vn

**Soil Type Descriptions**

**Vn - Vamont-Urban land complex**

Hydric Status	All components are not hydric and no components are unranked.
Minimum Depth to Bedrock	

**Vamont (50 percent)**

Hydrologic Group	High runoff potential
Soil Drainage Class	Somewhat poorly drained
Corrosion Potential - Uncoated Steel	High
Depth to Restrictive Feature	

Horizon	Soil Texture	Upper Boundary	Lower Boundary	AASHTO	Unified
H1	clay	0 cm	20 cm	A-7-6	CH
H2	clay	20 cm	178 cm	A-7-6	CH, CL
H3	clay	178 cm	203 cm	A-7-6	CH

**Urban land (35 percent)**

Horizon	Soil Texture	Upper Boundary	Lower Boundary	AASHTO	Unified
H1	variable	0 cm	102 cm		

**Unnamed, minor components (15 percent)**

**Soils Descriptions** Commercial Property**AASHTO Classification Definitions**

<b>A-1, A-1-a, A-1-b</b>	Granular materials (35% or less passing No. 200 sieve), silt fragments, gravel and sand
<b>A-2, A-2-4, A-2-5, A-2-6, A-2-7</b>	Granular materials (35% or less passing No. 200 sieve), silty or clayey gravel and sand
<b>A-3</b>	Granular materials (35% or less passing No. 200 sieve), fine sand
<b>A-4</b>	Silt-Clay materials (more than 35% passing No. 200 sieve), silty soils
<b>A-5</b>	Silt-Clay materials (more than 35% passing No. 200 sieve), silty soils
<b>A-6</b>	Silt-Clay materials (more than 35% passing No. 200 sieve), clayey soils
<b>A-7, A-7-5, A-7-6</b>	Silt-Clay materials (more than 35% passing No. 200 sieve), clayey soils
<b>A-8</b>	Silt-Clay materials (more than 35% passing No. 200 sieve), clayey soils

**Unified Classification Definitions**

<b>CH</b>	Fine-grained soils, silts and clays (liquid limit is 50% or more), Fat Clay
<b>CL, CL-A (proposed), CL-K (proposed), CL-ML, CL-O (proposed), CL-T (proposed)</b>	Fine-grained soils, silts and clays (liquid limit is less than 50%), Lean Clay
<b>GC, GC-GM</b>	Coarse-grained soils, Gravels, gravel with fines, Clayey Gravel
<b>GM</b>	Coarse-grained soils, Gravels, gravel with fines, Silty Gravel
<b>GP, GP-GC, GP-GM</b>	Coarse-grained soils, Gravels, clean gravels, Poorly Graded Gravel
<b>GW, GW-GC, GW-GM</b>	Coarse-grained soils, Gravels, clean gravels, Well-Graded Gravel
<b>MH, MH-A, MH-K, MH-O, MH-T</b>	Fine-grained soils, silts and clays (liquid limit is 50% or more), Elastic Silt
<b>ML, ML-A (proposed), ML-K (proposed), ML-O (proposed), ML-T (proposed)</b>	Fine-grained soils, silts and clays (liquid limit is less than 50%), Silt
<b>OH, OH-T (proposed)</b>	Fine-grained soils, silts and clays (liquid limit is 50% or more), Organic Clay or Organic Silt
<b>OL</b>	Fine-grained soils, silts and clays (liquid limit is less than 50%), Organic Clay or Organic Silt
<b>PT</b>	Highly organic soils, Peat
<b>SC, SC-SM</b>	Coarse-grained soils, Sands, sands with fines, Clayey Sand
<b>SM</b>	Coarse-grained soils, Sands, sands with fines, Silty Sand
<b>SP, SP-SC, SP-SM</b>	Coarse-grained soils, Sands, clean sands, Poorly Graded Sand
<b>SW, SW-SC, SW-SM</b>	Coarse-grained soils, Sands, clean sands, Well-Graded Sand

**Source**

Natural Resources Conservation Service, Soil Survey Geographic (SSURGO) Database.

**Disclaimer**

This Soils Survey from Banks Environmental Data, Inc. has searched Natural Resources Conservation Service (NRCS) and the Soil Survey Geographic Database (SSURGO). All soil data presented on the map and in the details section are based on information obtained from NRCS. Although Banks performs quality assurance and quality control on all data, inaccuracies of the data and mapped locations could possibly be traced to the source. Banks Environmental Data, Inc. cannot fully guarantee the accuracy of the SSURGO database maintained by NRCS.

# Water & Oil/Gas Wells Map - 0.25 Mile Radius



Sources : Esri, DeLorme, NAVTEQ, USGS, Intermap, iPC, NRCAN, Esri  
 Bingham, Japan, METI, Esri China (Hong Kong), Esri (Thailand), TomTom, 2013

## Commercial Property

- Single Water Well
- Water Well Cluster
- Single Oil/Gas/Other Well
- Oil/Gas/Other Well Cluster
- Water/Oil/Gas/Other Well Cluster

★ Target Property

Search Buffer

Texas Land Survey

1 : 5,000

Lambert Conformal Conic Projection  
 1983 North American Datum  
 First Standard Parallel: 33° 00' North  
 Second Standard Parallel: 45° 00' North  
 Central Meridian: 96° 00' West  
 Latitude of Origin: 39° 00' North



**This well scan searched for state and federal wells currently digitized in our geospatial database. No wells were found, but more wells could exist within the search area.**

#### Source

U.S. Geological Survey, Texas Water Development Board (GW and Submitted Driller's Report), Texas Commission of Environmental Quality (PWS), Railroad Commission of Texas (Production Data)

#### Disclaimer

This well scan from Banks Environmental Data, Inc. has included a digital search of state and federal wells currently digitized in our geospatial database. Since this scan includes only well data that is currently mapped in our geospatial database, more wells could exist within the search area. For a complete well search or to locate more details, please contact Banks to obtain a full Water Well Report or Oil & Gas Well/Pipeline Search Report. More detailed individual well records can also be obtained from Banks for an additional cost, please reference a Well ID # from this well scan.

All well locations are based on information obtained from state and federal sources. Although Banks performs quality assurance and quality control on all data, inaccuracies of the records and mapped locations could possibly be traced to the specific regulatory authority or individual well driller. Banks Environmental Data, Inc. cannot fully guarantee the accuracy of the data or well location(s) of the maps and records maintained by the state and federal agencies.

## Mapped Sites Summary *Commercial Property*



Database	Distance from Target Property	Map ID	Facility Site Name	Facility Site Address	Site Details Page #
----------	-------------------------------	--------	--------------------	-----------------------	---------------------

\*Sites are sorted by database tier, database, and distance from the target site.

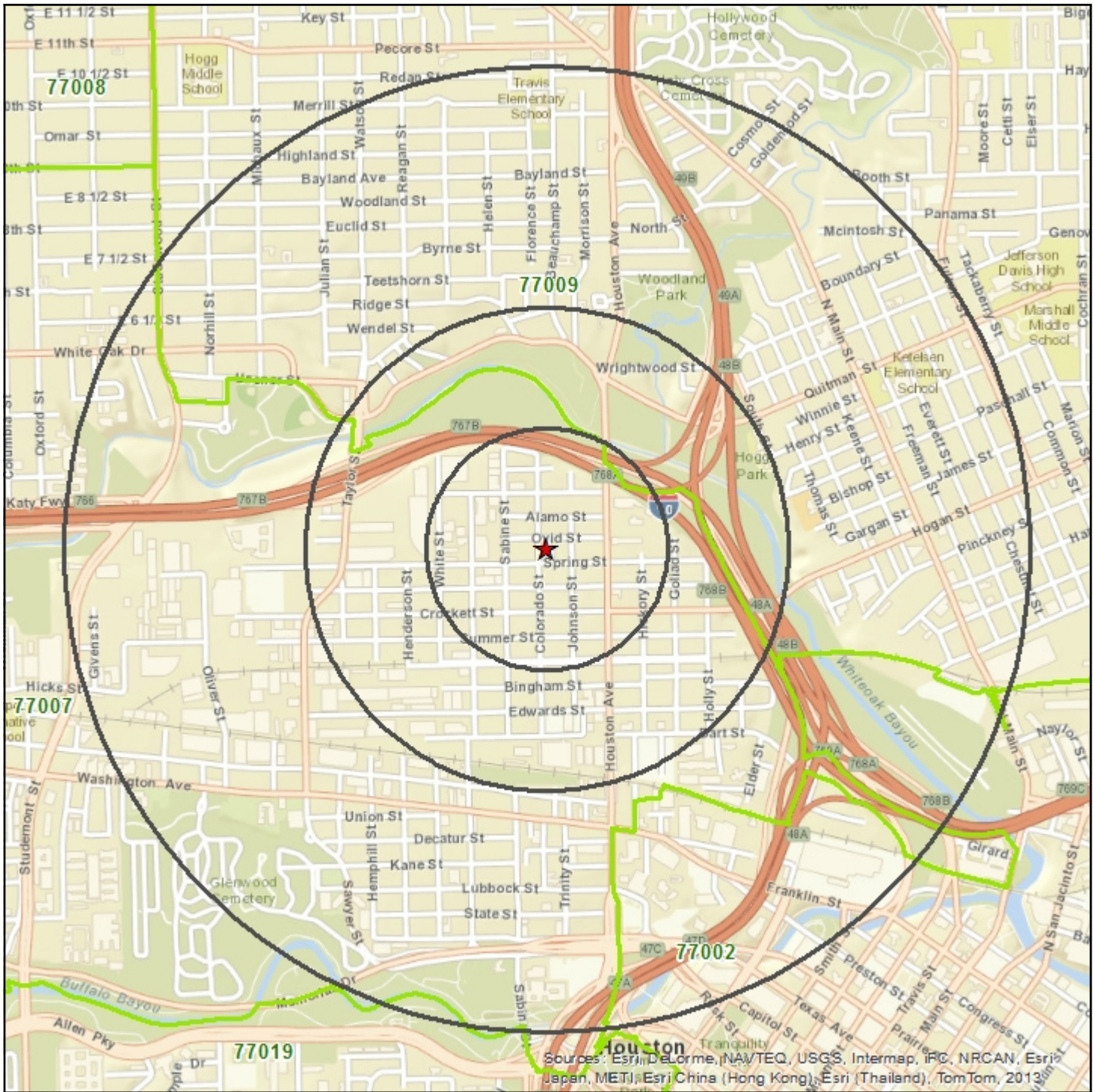
CER NFRAP	0.33 miles S	17	PUREX CORP TURCO PRODUCTS DIV	1606 HENDERSON, HOUSTON, TX 77007	18
RCRA GEN	0.14 miles S	5	HALLIBURTON ENERGY SERVICES INC	1907 SABINE, HOUSTON, TX 77007	19
FED BWN	0.39 miles S	19		0 Wrightwood SW quad. of Wrightwood and Houston Ave., Houston, TX 77009	21
ERNS	0.04 miles S	1		1610 SPRING, HOUSTON, TX	22
ST NPL	0.72 miles S	30	MANY DIVERSIFIED INTERESTS INC	1520 OLIVER ST, HOUSTON, TX	23
LPST	0.13 miles S	3	SPRING STREET REALTY	1824 SPRING ST, HOUSTON, TX 77007	24
LPST	0.14 miles S	6	C AND L SUPPLY	2018 HOUSTON AVE, HOUSTON, TX 77007	25
LPST	0.25 miles S	13	THE CECO CORP	1902 WEBER ST, HOUSTON, TX 77007	26
LPST	0.25 miles S	13	TEJAS MATERIALS	1902 WEBER ST, HOUSTON, TX 77007	27
LPST	0.27 miles S	15	WHITE STREET RECORD CENTER	2201 WHITE ST 2001-2299 WHITE ST, HOUSTON, TX 77007	28
LPST	0.29 miles S	16	FORMER TEXGAS SERVICE STATION	2450 HOUSTON AVE, HOUSTON, TX 77007	29
LPST	0.39 miles S	19	PARDO TIRE	2520 HOUSTON ST, HOUSTON, TX 77009	31
LPST	0.39 miles S	20	ORIENTAL LAUNDRY	1314 HOUSTON AVE, HOUSTON, TX 77007	32
LPST	0.4 miles S	21	SILVER EAGLE DIST INC	1301 WHITE ST, HOUSTON, TX 77001	33
LPST	0.4 miles S	22	STOP N GO 2373	1514 WHITE OAK DR, HOUSTON, TX 77009	34
LPST	0.4 miles S	23	MONTALBANO TIRE CO INC	1302 HOUSTON AVE, HOUSTON, TX 77007	35
LPST	0.43 miles S	25	PIPE YARD	2313 OVID, HOUSTON, TX 77007	36
LPST	0.44 miles S	26	KING BISCUIT RESTAURANT	1606 WHITE OAK DR, HOUSTON, TX 77009	37
LPST	0.49 miles S	28	N MERFISH SUPPLY CO	1818 CENTER ST, HOUSTON, TX 77007	38
PST	0.12 miles S	2	CLEATIS A RYMAN	1917 HOUSTON Ave, HOUSTON, TX 77007	39
PST	0.13 miles S	3	SPRING STREET REALTY	1824 SPRING ST, HOUSTON, TX 77007	40
PST	0.14 miles S	6	C & L SUPPLY SUPERVISORY SERV	2018 HOUSTON AVE, HOUSTON, TX 77007	41
PST	0.15 miles S	8	KRC ENTERPRISE INC	1802 CROCKETT, HOUSTON, TX 77007	42
PST	0.17 miles S	9	TRI-GAS	2200 HOUSTON AVE, HOUSTON, TX 77007	43
PST	0.18 miles S	10	LA CHARRA NEGRA	1800 HOUSTON AVE, HOUSTON, TX 77007	44
PST	0.23 miles S	12	MARTIN POULTRY EGG & FROZEN FOOD	2002 WHITE ST, HOUSTON, TX 77007	45
PST	0.25 miles S	13	THE CECO CORPORATION	1902 WEBER ST, HOUSTON, TX 77007	46
VCP	0.13 miles S	3	Former Harris Moving & Storage	1824 Spring St., Houston, TX 77007	47
VCP	0.15 miles S	7	North Houston Avenue Vacant Lot	1819 Houston Avenue, Houston, TX 77007-4141	48
VCP	0.22 miles S	11	1402 Crockett	1402 Crockett, Houston, TX 77007	49
VCP	0.33 miles S	17	Turco Products, Inc.	1606 Henderson Street, Houston, TX	50
VCP	0.37 miles S	18	Wenco Distributors	1615 Dart Street, Houston, TX 77007-4025	51
VCP	0.42 miles S	24	Riviana Foods, Inc.	1702 Taylor St., Houston, TX 77007	52
VCP	0.46 miles S	27	Triple D Uniform Supply	1216 Houston Avenue, Houston, TX 77007-6234	53
VCP	0.49 miles S	29	Affordable Feed and Tack	1802 Center Street, Houston, TX 77007-6103	54
HW	0.13 miles S	4	PPG INDUSTIRES 1601 ENVIRONMENTAL	2211 Sabine St, Houston, TX 77007	55
HW	0.14 miles S	5	HALLIBURTON ENERGY SERVICES	1907 SABINE ST, HOUSTON, TX 77007	56
HW	0.25 miles S	14	KWIKFORM AMERICA	1614 HOUSTON AVE, HOUSTON, TX 77007	58
RCRA	0.13 miles S	4	PPG INDUSTIRES INC	2211 SABINE ST, HOUSTON, TX 77007	59
RCRA	0.25 miles S	14	KWIKFORM AMERICA INC	1614 S HOUSTON RD, HOUSTON, TX 77002	60

### End of Mapped Sites Summary Section

**Banks Environmental Data performed a thorough search and no unmapped sites were found.**



# Zip Code Map - 1 Mile Radius



## Commercial Property

- ★ Target Property
- Search Buffer
- Zip Code Boundary

1 : 19,000



Lambert Conformal Conic Projection  
 1983 North American Datum  
 First Standard Parallel: 33° 00' North  
 Second Standard Parallel: 45° 00' North  
 Central Meridian: 96° 00' West  
 Latitude of Origin: 39° 00' North

**Mapped Sites Details: CER NFRAP (MapID 17)** *Commercial Property*



**CER NFRAP - CERCLIS NFRAP**

**Map ID #17** CER NFRAP - CERCLIS NFRAP **Source: EPA**

**Site ID: 0601773** EPA ID: TXD010790046 **Banks ID: 0601773**

PUREX CORP TURCO PRODUCTS DIV Rel. Loc.: 0.33 miles S  
 1606 HENDERSON, HOUSTON, TX 77007 Elevation: 56.05 feet (+9.23)  
 Contact: Soil Type: Vn

**National Priority List Status:** Not on the NPL  
**Facility Type:** Not a federal facility

Action	Start Date	Completion Date
DISCOVERY		7/1/1982 12:00:00 AM
PRELIMINARY ASSESSMENT	8/1/1982	8/1/1982 12:00:00 AM
ARCHIVE SITE		8/1/1982 12:00:00 AM

**End of CER NFRAP Sites Section**

## Mapped Sites Details: RCRA GEN (MapID 5) Commercial Property



## RCRA GEN - RCRA Generators

<b>Map ID #5</b>	<b>RCRA GEN - RCRA Generators</b>	<b>Source: EPA</b>	
<b>EPA Handler ID: TX0000132142</b>	<b>Handler Sequence Number: 9</b>	<b>Banks ID: TX0000132142</b>	
HALLIBURTON ENERGY SERVICES INC 1907 SABINE, HOUSTON, TX 77007 Contact: LISA REYNA		Rel. Loc.: 0.14 miles S Elevation: 49.89 feet (+3.07) Soil Type: Vn	
<b>Owner Name:</b>	HALLIBURTON ENERGY SERVICES INC		
<b>Number of Owners:</b>	1		
<b>Operator Name:</b>	HALLIBURTON ENERGY SERVICES INC		
<b>Number of Operators:</b>	1		
<b>Mailing Address:</b>	PO BOX 42810, HOUSTON, TX 77242		
<b>Contact Name:</b>	LISA REYNA		
<b>Contact Address:</b>	PO BOX 42810, HOUSTON, TX 77242		
<b>Contact Phone:</b>	713-865-5456		
<b>Contact Email Address:</b>			
<b>Government Performance and Results Act (GPRA) Permit:</b>	The facility does not exist on the Operating/Post-Closure Permit Baseline.		
<b>Government Performance and Results Act (GPRA) Corrective Action:</b>	No		
<b>Workload Legend: L=Land Disposal I=Incineration B=Boiler/Industrial Furnace S=Storage T=Treatment</b>			
<b>Permit Workload:</b>	-----		
<b>Closure Workload:</b>	-----		
<b>Post-Closure Workload:</b>	-----		
<b>Subject to Corrective Action:</b>	No		
<b>Subject to Corrective Action 3004:</b>	No		
<b>Subject to Corrective Action Non-TSDF:</b>	No		
<b>Corrective Action Workload:</b>	No		
<b>Generator Status:</b>	Small Quantity Generator		
<b>Nuclear Mixed Waste Handler:</b>	Yes		
<b>Onsite Burner Exemption:</b>	No		
<b>Furnace Exemption:</b>	No		
<b>Underground Injection Activity:</b>	No		
<b>NAIC Description 1:</b>	Other Fabricated Wire Product Manufacturing		
<b>NAIC Description 2:</b>			
<b>NAIC Description 3:</b>			
<b>NAIC Description 4:</b>			
<b>Federal Generator Class:</b>	Small Quantity Generator		
<b>State Generator Class:</b>			
<b>Environmental Controls in Place:</b>	No		
<b>Institutional Controls in Place:</b>	No		
<b>Groundwater Controls in Place:</b>	No		
<b>Significant Non-Compliance:</b>	No		
<b>Unaddressed Significant Non-Complier:</b>	No		
<b>Addressed Significant Non-Complier:</b>	No		
<b>Significant Non-Complier with Compliance Schedule:</b>	No		
<b>Enforcement Description</b>	<b>Responsible Enforcement Agency</b>	<b>Enforcement Date</b>	<b>Penalty Description</b>
<b>Evaluation Description</b>	<b>Responsible Agency</b>	<b>Evaluation Date</b>	<b>Violation Found</b>
<b>Violation Description</b>	<b>Violation Determined By</b>	<b>Violation Date</b>	<b>Actual Resolution Date</b> <b>Scheduled Resolution Date</b>
<b>Hazardous Waste Description</b>			
CADMIUM			

**Mapped Sites Details: RCRA GEN (MapID 5) Commercial Property**

Continued from Previous Page

<b>CHROMIUM</b>
<b>CORROSIVE WASTE</b>
<b>DESCRIPTION</b>
<b>IGNITABLE WASTE</b>
<b>LEAD</b>
<p>THE FOLLOWING SPENT HALOGENATED SOLVENTS USED IN DEGREASING: TETRACHLOROETHYLENE, TRICHLOROETHYLENE, METHYLENE CHLORIDE, 1,1,1-TRICHLOROETHANE, CARBON TETRACHLORIDE AND CHLORINATED FLUOROCARBONS; ALL SPENT SOLVENT MIXTURES/BLENDS USED IN DEGREASING CONTAINING, BEFORE USE, A TOTAL OF TEN PERCENT OR MORE (BY VOLUME) OF ONE OR MORE OF THE ABOVE HALOGENATED SOLVENTS OR THOSE SOLVENTS LISTED IN F002, F004, AND F005; AND STILL BOTTOMS FROM THE RECOVERY OF THESE SPENT SOLVENTS AND SPENT SOLVENT MIXTURES.</p> <p>THE FOLLOWING SPENT HALOGENATED SOLVENTS: TETRACHLOROETHYLENE, METHYLENE CHLORIDE, TRICHLOROETHYLENE, 1,1,1-TRICHLOROETHANE, CHLOROBENZENE, 1,1,2-TRICHLORO-1,2,2-TRIFLUOROETHANE, ORTHO-DICHLOROBENZENE, TRICHLOROFLUOROMETHANE, AND 1,1,2, TRICHLOROETHANE; ALL SPENT SOLVENT MIXTURES/BLENDS CONTAINING, BEFORE USE, A TOTAL OF TEN PERCENT OR MORE (BY VOLUME) OF ONE OR MORE OF THE ABOVE HALOGENATED SOLVENTS OR THOSE SOLVENTS LISTED IN F001, F004, AND F005; AND STILL BOTTOMS FROM THE RECOVERY OF THESE SPENT SOLVENTS AND SPENT SOLVENT MIXTURES.</p> <p>THE FOLLOWING SPENT NONHALOGENATED SOLVENTS: TOLUENE, METHYL ETHYL KETONE, CARBON DISULFIDE, ISOBUTANOL, PYRIDINE, BENZENE, 2-ETHOXYETHANOL, AND 2-NITROPROPANE; ALL SPENT SOLVENT MIXTURES/BLENDS CONTAINING, BEFORE USE, A TOTAL OF TEN PERCENT OR MORE (BY VOLUME) OF ONE OR MORE OF THE ABOVE NONHALOGENATED SOLVENTS OR THOSE SOLVENTS LISTED IN F001, F002, OR F004; AND STILL BOTTOMS FROM THE RECOVERY OF THESE SPENT SOLVENTS AND SPENT SOLVENT MIXTURES.</p> <p>THE FOLLOWING SPENT NONHALOGENATED SOLVENTS: XYLENE, ACETONE, ETHYL ACETATE, ETHYL BENZENE, ETHYL ETHER, METHYL ISOBUTYL KETONE, N-BUTYL ALCOHOL, CYCLOHEXANONE, AND METHANOL; ALL SPENT SOLVENT MIXTURES/BLENDS CONTAINING, BEFORE USE, ONLY THE ABOVE SPENT NONHALOGENATED SOLVENTS; AND ALL SPENT SOLVENT MIXTURES/BLENDS CONTAINING, BEFORE USE, ONE OR MORE OF THE ABOVE NONHALOGENATED SOLVENTS, AND A TOTAL OF TEN PERCENT OR MORE (BY VOLUME) OF ONE OR MORE OF THOSE SOLVENTS LISTED IN F001, F002, F004, AND F005; AND STILL BOTTOMS FROM THE RECOVERY OF THESE SPENT SOLVENTS AND SPENT SOLVENT MIXTURES.</p>

**End of RCRA GEN Sites Section**

**Mapped Sites Details: FED BWN (MapID 19) Commercial Property****FED BWN - Federal Brownfields**

<b>Map ID #19</b>	<b>FED BWN - Federal Brownfields</b>	<b>Source: EPA</b>
<b>EPA Property ID: 124361</b>	<b>Secondary ID: NA</b>	<b>Banks ID: 124361</b>
0 Wrightwood SW quad. of Wrightwood and Houston Ave., Houston, TX 77009		Rel. Loc.: 0.39 miles S Elevation: 29.23 feet (-17.59)
Contact:		Soil Type: Vn
<b>Acres:</b>	0.28	
<b>Parcel Number:</b>		
<b>Current Owner:</b>	Houston Parks Board	
<b>Current Use:</b>		
<b>Former Use:</b>	A small 0.28 acre piece of land that will eventually be used to increase the overall parkland of Woodland Park in Houston.	
<b>State/Tribal ID:</b>		
<b>State/Tribal Enroll Date:</b>		
<b>No Further Action Date:</b>		
<b>Institutional Control Required:</b>	Unknown	
<b>Institutional Control in Place:</b>		
<b>Date Institutional Control Required:</b>		
<b>Proprietary Controls:</b>		
<b>Government Controls:</b>		
<b>Additional Institutional Control Information:</b>		
<b>Action</b>	<b>Start Date</b>	<b>Completion Date</b>
Phase I Environmental Assessment	4/7/2010	9/28/2010
<b>Site Name</b>	<b>Recipient Name</b>	
0 Wrightwood	Houston, City of	
<b>Media Affected</b>		
Unknown		

**End of FED BWN Sites Section**

**Mapped Sites Details: ERNS (MapID 1) Commercial Property****ERNS - ERNS List**

Map ID #1	ERNS - ERNS List	Source: EPA/National Response Center
<b>NRC Report #: 363727</b>	<b>Secondary ID: NA</b>	<b>Banks ID: 363727</b>
1610 SPRING, HOUSTON, TX		Rel. Loc.: 0.04 miles S Elevation: 46.91 feet (+.09)
Contact:		Soil Type: Vn
<b>Responsible Party:</b>	SOUTHWEST COCA COLA	
<b>Incident Location:</b>		
<b>Incident Date/Time:</b>	10/8/1996 12:00 PM	
<b>Cause of Incident:</b>	TRANSPORT ACCIDENT	
<b>Description of Incident:</b>	TRACTOR TRAILER SADDLE TANK RUPTURED BY A RAILROAD GRADE CROSSING	
<b>Incident Type:</b>	MOBILE	
<b>Additional Information:</b>		
<b>Any Fatalities:</b>	Unknown	
<b>Number of Fatalities:</b>		
<b>Remedial Action Taken:</b>		
<b>Medium Affected:</b>	LAND	
<b>Medium Description:</b>	ASPHALT>DRAIN	
<b>Materials Spilled:</b>	OIL: DIESEL	
<b>Railroad Involved:</b>		
<b>Pipeline Type Involved:</b>	UNKNOWN	
<b>Source:</b>	UNAVAILABLE	

**End of ERNS Sites Section**

**Mapped Sites Details: ST NPL (MapID 30) Commercial Property****ST NPL - State/Tribal Equivalent NPL**

<b>Map ID #30</b>	<b>ST NPL - State/Tribal Equivalent NPL</b>	<b>Source: TCEQ</b>
<b>TCEQ Regulated ID: RN105166813</b>	<b>TCEQ Internal ID: SUP042</b>	<b>Banks ID: RN105166813</b>
MANY DIVERSIFIED INTERESTS INC 1520 OLIVER ST, HOUSTON, TX Contact: Winsor, Phil		Rel. Loc.: 0.72 miles S Elevation: 55.4 feet (+8.58) Soil Type: Ur
<b>Status:</b>	ACTIVE	
<b>Status Date:</b>	2/21/1996	
<b>HRS Score:</b>	32.07	
<b>Additional Site Information:</b>	OPERATION & MAINTENANCE, CLEANUP COMPL-PRELIM CLOSE OUT RPT APPR	
<b>Link to Additional Information:</b>	<a href="http://www.tceq.state.tx.us/remediation/superfund/epa/mdia">http://www.tceq.state.tx.us/remediation/superfund/epa/mdia</a>	

**End of ST NPL Sites Section**

## Mapped Sites Details: LPST (MapID 3) Commercial Property



## LPST - State/Tribal Leaking Storage Tank

<b>Map ID #3</b>	<b>LPST - State/Tribal Leaking Storage Tank</b>		<b>Source: TCEQ</b>
<b>LPST ID: 118328</b>	<b>Facility ID: 0010677</b>		<b>Banks ID: 118328</b>
SPRING STREET REALTY 1824 SPRING ST, HOUSTON, TX 77007		Rel. Loc.: 0.13 miles S Elevation: 50.86 feet (+4.04)	
Contact: JOE HARRIS		Soil Type: Ur	
<b>Status:</b>	Final concurrence pending documentation of well plugging		
<b>Leak Discovery Date:</b>	4/7/2010		
<b>Damage Description:</b>	gw impacted, no apparent threats or impacts to receptors		
<b>Tank #</b>	<b>#1</b>	<b>#1</b>	<b>#2</b>
<b>Status:</b>	Removed from Ground	Removed from Ground	Removed from Ground
<b>Status Date:</b>	5/9/1991	5/28/2010	5/9/1991
<b>Capacity:</b>	6000	10000	7800
<b>Install Date:</b>	1/1/1956	5/1/1991	1/1/1981
<b>Last Used Date:</b>			
<b>Above or Below Ground Tank:</b>	below	below	below
<b>Unit ID:</b>			
<b>Construction Material:</b>	Steel	FRP (fiberglass-reinforced plastic)	FRP (fiberglass-reinforced plastic)
<b>Other Construction Material Description:</b>			
<b>Piping Material:</b>	Steel	FRP (fiberglass-reinforced plastic)	Steel
<b>Other Piping Material Description:</b>			
<b>Tank Contents:</b>			
<b>Other Tank Contents Description:</b>			
<b>Tank #</b>	<b>#2</b>	<b>#3</b>	
<b>Status:</b>	Removed from Ground	Removed from Ground	
<b>Status Date:</b>	5/28/2010	5/9/1991	
<b>Capacity:</b>	10000	7300	
<b>Install Date:</b>	5/1/1991	1/1/1981	
<b>Last Used Date:</b>			
<b>Above or Below Ground Tank:</b>	below	below	
<b>Unit ID:</b>			
<b>Construction Material:</b>	FRP (fiberglass-reinforced plastic)	FRP (fiberglass-reinforced plastic)	
<b>Other Construction Material Description:</b>			
<b>Piping Material:</b>	FRP (fiberglass-reinforced plastic)	Steel	
<b>Other Piping Material Description:</b>			
<b>Tank Contents:</b>			
<b>Other Tank Contents Description:</b>			



**Mapped Sites Details: LPST (MapID 6) Commercial Property**

<b>Map ID #6</b>	<b>LPST - State/Tribal Leaking Storage Tank</b>		<b>Source: TCEQ</b>
<b>LPST ID: 105024</b>	<b>Facility ID: 0034824</b>		<b>Banks ID: 105024</b>
C AND L SUPPLY			Rel. Loc.: 0.14 miles S
2018 HOUSTON AVE, HOUSTON, TX 77007			Elevation: 42.24 feet (-4.58)
Contact: CARL VICK			Soil Type: Vn
<b>Status:</b>	Final concurrence issued, case close		
<b>Leak Discovery Date:</b>	9/17/1991		
<b>Damage Description:</b>	minor soil contamination - no remedial action required		
<b>Tank #</b>	<b>#1</b>	<b>#2</b>	
<b>Status:</b>	Removed from Ground	Removed from Ground	
<b>Status Date:</b>	9/5/1991	9/5/1991	
<b>Capacity:</b>	2000	2000	
<b>Install Date:</b>	5/1/1979	5/1/1979	
<b>Last Used Date:</b>			
<b>Above or Below Ground Tank:</b>	below	below	
<b>Unit ID:</b>			
<b>Construction Material:</b>	Steel	Steel	
<b>Other Construction Material Description:</b>			
<b>Piping Material:</b>	Steel	Steel	
<b>Other Piping Material Description:</b>			
<b>Tank Contents:</b>			
<b>Other Tank Contents Description:</b>			

**Mapped Sites Details: LPST (MapID 13) Commercial Property**

<b>Map ID #13</b>	<b>LPST - State/Tribal Leaking Storage Tank</b>		<b>Source: TCEQ</b>
<b>LPST ID: 105183</b>	<b>Facility ID: 0023607</b>		<b>Banks ID: 105183</b>
THE CECO CORP 1902 WEBER ST, HOUSTON, TX 77007 Contact: DAVID PASATERE			Rel. Loc.: 0.25 miles S Elevation: 46.86 feet (+.04) Soil Type: Ur
<b>Status:</b>	Final concurrence issued, case close		
<b>Leak Discovery Date:</b>	11/3/1992		
<b>Damage Description:</b>	minor soil contamination - does not require a rap		
<b>Tank #</b>	<b>#1</b>	<b>#2</b>	
<b>Status:</b>	Removed from Ground	Removed from Ground	
<b>Status Date:</b>	10/26/1992	10/26/1992	
<b>Capacity:</b>	8000	2000	
<b>Install Date:</b>	1/1/1971	1/1/1971	
<b>Last Used Date:</b>			
<b>Above or Below Ground Tank:</b>	below	below	
<b>Unit ID:</b>			
<b>Construction Material:</b>	Steel	Steel	
<b>Other Construction Material Description:</b>			
<b>Piping Material:</b>	Steel	Steel	
<b>Other Piping Material Description:</b>			
<b>Tank Contents:</b>			
<b>Other Tank Contents Description:</b>			

**Mapped Sites Details: LPST (MapID 13)** *Commercial Property*

<b>Map ID #13</b>	<b>LPST - State/Tribal Leaking Storage Tank</b>	<b>Source: TCEQ</b>
<b>LPST ID: 116895</b>	<b>Facility ID: NA</b>	<b>Banks ID: 116895</b>
TEJAS MATERIALS 1902 WEBER ST, HOUSTON, TX 77007 Contact: BRIAN HUGHLEY		Rel. Loc.: 0.25 miles S Elevation: 46.86 feet (+.04) Soil Type: Ur
<b>Status:</b>	Preassessment / release determination	
<b>Leak Discovery Date:</b>	4/5/2006	
<b>Damage Description:</b>	assessment incomplete, no apparent receptors impacted	

**Mapped Sites Details: LPST (MapID 15) Commercial Property**

<b>Map ID #15</b>	<b>LPST - State/Tribal Leaking Storage Tank</b>	<b>Source: TCEQ</b>
<b>LPST ID: 107784</b>	<b>Facility ID: 0058496</b>	<b>Banks ID: 107784</b>
WHITE STREET RECORD CENTER		Rel. Loc.: 0.27 miles S
2201 WHITE ST 2001-2299 WHITE ST, HOUSTON, TX 77007		Elevation: 52.26 feet (+5.44)
Contact: BILL BOSTINE		Soil Type: Ur
<b>Status:</b>	Final concurrence issued, case close	
<b>Leak Discovery Date:</b>	1/20/1994	
<b>Damage Description:</b>	gw impacted, no apparent threats or impacts to receptors	
<b>Tank #</b>	<b>#1</b>	
<b>Status:</b>	Removed from Ground	
<b>Status Date:</b>	12/21/1993	
<b>Capacity:</b>	12000	
<b>Install Date:</b>	5/1/1981	
<b>Last Used Date:</b>		
<b>Above or Below Ground Tank:</b>	below	
<b>Unit ID:</b>		
<b>Construction Material:</b>	FRP (fiberglass-reinforced plastic)	
<b>Other Construction Material Description:</b>		
<b>Piping Material:</b>		
<b>Other Piping Material Description:</b>		
<b>Tank Contents:</b>		
<b>Other Tank Contents Description:</b>		

## Mapped Sites Details: LPST (MapID 16) Commercial Property



<b>Map ID #16</b>	<b>LPST - State/Tribal Leaking Storage Tank</b>		<b>Source: TCEQ</b>
<b>LPST ID: 108168</b>	<b>Facility ID: 0067288</b>		<b>Banks ID: 108168</b>
FORMER TEXGAS SERVICE STATION			Rel. Loc.: 0.29 miles S
2450 HOUSTON AVE, HOUSTON, TX 77007			Elevation: 24.21 feet (-22.62)
Contact: LEE HERMAN			Soil Type: Vn
<b>Status:</b>	Final concurrence issued, case close		
<b>Leak Discovery Date:</b>	5/17/1994		
<b>Damage Description:</b>	gw impacted, no apparent threats or impacts to receptors		
<b>Tank #</b>	<b>#1</b>	<b>#10</b>	<b>#11</b>
<b>Status:</b>	Removed from Ground	Removed from Ground	Removed from Ground
<b>Status Date:</b>	10/3/1995	10/5/1995	10/30/1995
<b>Capacity:</b>	8000	6000	1000
<b>Install Date:</b>	8/31/1987	8/31/1987	8/31/1987
<b>Last Used Date:</b>			
<b>Above or Below Ground Tank:</b>	below	below	below
<b>Unit ID:</b>			
<b>Construction Material:</b>			
<b>Other Construction Material Description:</b>			
<b>Piping Material:</b>			
<b>Other Piping Material Description:</b>			
<b>Tank Contents:</b>			
<b>Other Tank Contents Description:</b>			
<b>Tank #</b>	<b>#2</b>	<b>#3</b>	<b>#4</b>
<b>Status:</b>	Removed from Ground	Removed from Ground	Removed from Ground
<b>Status Date:</b>	10/3/1995	10/3/1995	10/4/1995
<b>Capacity:</b>	6000	1000	6000
<b>Install Date:</b>	8/31/1987	8/31/1987	8/31/1987
<b>Last Used Date:</b>			
<b>Above or Below Ground Tank:</b>	below	below	below
<b>Unit ID:</b>			
<b>Construction Material:</b>			
<b>Other Construction Material Description:</b>			
<b>Piping Material:</b>			
<b>Other Piping Material Description:</b>			
<b>Tank Contents:</b>			
<b>Other Tank Contents Description:</b>			
<b>Tank #</b>	<b>#5</b>	<b>#6</b>	<b>#7</b>
<b>Status:</b>	Removed from Ground	Removed from Ground	Removed from Ground
<b>Status Date:</b>	10/4/1995	10/4/1995	10/5/1995
<b>Capacity:</b>	1000	6000	1000
<b>Install Date:</b>	8/31/1987	8/31/1987	8/31/1987
<b>Last Used Date:</b>			
<b>Above or Below Ground Tank:</b>	below	below	below
<b>Unit ID:</b>			
<b>Construction Material:</b>			
<b>Other Construction Material Description:</b>			
<b>Piping Material:</b>			
<b>Other Piping Material Description:</b>			
<b>Tank Contents:</b>			
<b>Other Tank Contents Description:</b>			
<b>Tank #</b>	<b>#8</b>	<b>#9</b>	
<b>Status:</b>	Removed from Ground	Removed from Ground	

**Mapped Sites Details: LPST (MapID 16)** *Commercial Property*



Continued from Previous Page

<b>Status Date:</b>	10/5/1995	10/5/1995
<b>Capacity:</b>	6000	6000
<b>Install Date:</b>	8/31/1987	8/31/1987
<b>Last Used Date:</b>		
<b>Above or Below Ground Tank:</b>	below	below
<b>Unit ID:</b>		
<b>Construction Material:</b>		
<b>Other Construction Material Description:</b>		
<b>Piping Material:</b>		
<b>Other Piping Material Description:</b>		
<b>Tank Contents:</b>		
<b>Other Tank Contents Description:</b>		

**Mapped Sites Details: LPST (MapID 19) Commercial Property**

<b>Map ID #19</b>	<b>LPST - State/Tribal Leaking Storage Tank</b>		<b>Source: TCEQ</b>
<b>LPST ID: 103946</b>	<b>Facility ID: 0063392</b>		<b>Banks ID: 103946</b>
PARDO TIRE 2520 HOUSTON ST, HOUSTON, TX 77009 Contact: TRACY LEWIS			Rel. Loc.: 0.39 miles S Elevation: 29.23 feet (-17.59) Soil Type: Vn
<b>Status:</b>	Final concurrence issued, case close		
<b>Leak Discovery Date:</b>	7/21/1992		
<b>Damage Description:</b>	minor soil contamination - does not require a rap		
<b>Tank #</b>	<b>#1</b>	<b>#2</b>	<b>#3</b>
<b>Status:</b>	Removed from Ground	Removed from Ground	Removed from Ground
<b>Status Date:</b>	7/9/1992	7/9/1992	7/9/1992
<b>Capacity:</b>	1000	1000	500
<b>Install Date:</b>	8/31/1987	8/31/1987	8/31/1987
<b>Last Used Date:</b>			
<b>Above or Below Ground Tank:</b>	below	below	below
<b>Unit ID:</b>			
<b>Construction Material:</b>	Steel	Steel	Steel
<b>Other Construction Material Description:</b>			
<b>Piping Material:</b>	Steel	Steel	Steel
<b>Other Piping Material Description:</b>			
<b>Tank Contents:</b>			
<b>Other Tank Contents Description:</b>			

**Mapped Sites Details: LPST (MapID 20) Commercial Property**

<b>Map ID #20</b>	<b>LPST - State/Tribal Leaking Storage Tank</b>	<b>Source: TCEQ</b>
<b>LPST ID: 093543</b>	<b>Facility ID: 0015276</b>	<b>Banks ID: 093543</b>
ORIENTAL LAUNDRY 1314 HOUSTON AVE, HOUSTON, TX 77007 Contact: GEORGE FODELL		Rel. Loc.: 0.39 miles S Elevation: 46.45 feet (-.37) Soil Type: Ur
<b>Status:</b>	Final concurrence issued, case close	
<b>Leak Discovery Date:</b>	8/22/1989	
<b>Damage Description:</b>	soil contamination only, requires full site assessment & rap	
<b>Tank #</b>	<b>#1</b>	
<b>Status:</b>	Removed from Ground	
<b>Status Date:</b>	7/1/1989	
<b>Capacity:</b>	1000	
<b>Install Date:</b>	1/1/1974	
<b>Last Used Date:</b>		
<b>Above or Below Ground Tank:</b>	below	
<b>Unit ID:</b>		
<b>Construction Material:</b>	Steel	
<b>Other Construction Material Description:</b>		
<b>Piping Material:</b>	Steel	
<b>Other Piping Material Description:</b>		
<b>Tank Contents:</b>		
<b>Other Tank Contents Description:</b>		



# Mapped Sites Details: LPST (MapID 21) *Commercial Property*



<b>Map ID #21</b>	<b>LPST - State/Tribal Leaking Storage Tank</b>		<b>Source: TCEQ</b>
<b>LPST ID: 093568</b>	<b>Facility ID: 0042285</b>		<b>Banks ID: 093568</b>
SILVER EAGLE DIST INC 1301 WHITE ST, HOUSTON, TX 77001 Contact: BOB BOBLITT			Rel. Loc.: 0.4 miles S Elevation: 52.19 feet (+5.37) Soil Type: Ur
<b>Status:</b>	Final concurrence issued, case close		
<b>Leak Discovery Date:</b>	8/28/1989		
<b>Damage Description:</b>	gw impacted, no apparent threats or impacts to receptors		
<b>Tank #</b>	<b>#1</b>	<b>#1</b>	<b>#2</b>
<b>Status:</b>	Removed from Ground	Removed from Ground	Removed from Ground
<b>Status Date:</b>	12/31/1989	11/7/2007	1/5/1999
<b>Capacity:</b>	10000	10000	10000
<b>Install Date:</b>	1/1/1983	12/14/1998	11/1/1989
<b>Last Used Date:</b>			
<b>Above or Below Ground Tank:</b>	below	below	below
<b>Unit ID:</b>			
<b>Construction Material:</b>	FRP (fiberglass-reinforced plastic)	Composite (steel w/external FRP cladding)	Composite (steel w/external FRP cladding)
<b>Other Construction Material Description:</b>			
<b>Piping Material:</b>	FRP (fiberglass-reinforced plastic)	FRP (fiberglass-reinforced plastic)	FRP (fiberglass-reinforced plastic)
<b>Other Piping Material Description:</b>			
<b>Tank Contents:</b>			
<b>Other Tank Contents Description:</b>			
<b>Tank #</b>	<b>#2</b>	<b>#3</b>	<b>#4</b>
<b>Status:</b>	Removed from Ground	Removed from Ground	Removed from Ground
<b>Status Date:</b>	11/8/2007	1/4/1999	1/5/1999
<b>Capacity:</b>	10000	10000	2000
<b>Install Date:</b>	12/14/1998	1/1/1983	1/1/1983
<b>Last Used Date:</b>			
<b>Above or Below Ground Tank:</b>	below	below	below
<b>Unit ID:</b>			
<b>Construction Material:</b>	Composite (steel w/external FRP cladding)	FRP (fiberglass-reinforced plastic)	FRP (fiberglass-reinforced plastic)
<b>Other Construction Material Description:</b>			
<b>Piping Material:</b>	FRP (fiberglass-reinforced plastic)	FRP (fiberglass-reinforced plastic)	FRP (fiberglass-reinforced plastic)
<b>Other Piping Material Description:</b>			
<b>Tank Contents:</b>			
<b>Other Tank Contents Description:</b>			
<b>Tank #</b>	<b>#5</b>	<b>#6</b>	
<b>Status:</b>	Removed from Ground	Removed from Ground	
<b>Status Date:</b>	12/31/1983	12/31/1983	
<b>Capacity:</b>	10000	10000	
<b>Install Date:</b>	1/1/1971	1/1/1971	
<b>Last Used Date:</b>			
<b>Above or Below Ground Tank:</b>	below	below	
<b>Unit ID:</b>			
<b>Construction Material:</b>	FRP (fiberglass-reinforced plastic)	FRP (fiberglass-reinforced plastic)	
<b>Other Construction Material Description:</b>			
<b>Piping Material:</b>	FRP (fiberglass-reinforced plastic)	FRP (fiberglass-reinforced plastic)	
<b>Other Piping Material Description:</b>			
<b>Tank Contents:</b>			
<b>Other Tank Contents Description:</b>			

**Mapped Sites Details: LPST (MapID 22) Commercial Property**

<b>Map ID #22</b>	<b>LPST - State/Tribal Leaking Storage Tank</b>		<b>Source: TCEQ</b>
<b>LPST ID: 115089</b>	<b>Facility ID: 0025216</b>		<b>Banks ID: 115089</b>
STOP N GO 2373			Rel. Loc.: 0.4 miles S
1514 WHITE OAK DR, HOUSTON, TX 77009			Elevation: 30.32 feet (-16.5)
Contact: C. SHAY WIDEMAN			Soil Type: An
<b>Status:</b>	Final concurrence issued, case close		
<b>Leak Discovery Date:</b>	11/29/2000		
<b>Damage Description:</b>	impacted gw w/in 500ft-0.25mi to sw used by human, endangered species		
<b>Tank #</b>	<b>#1</b>	<b>#2</b>	<b>#3</b>
<b>Status:</b>	Removed from Ground	Removed from Ground	In Use
<b>Status Date:</b>	7/2/2001	7/2/2001	
<b>Capacity:</b>	10000	10000	12000
<b>Install Date:</b>	1/1/1982	1/1/1982	10/1/2001
<b>Last Used Date:</b>			
<b>Above or Below Ground Tank:</b>	below	below	below
<b>Unit ID:</b>			
<b>Construction Material:</b>	Steel	Steel	Composite (steel w/external FRP cladding)
<b>Other Construction Material Description:</b>			
<b>Piping Material:</b>	FRP (fiberglass-reinforced plastic)	FRP (fiberglass-reinforced plastic)	FRP (fiberglass-reinforced plastic)
<b>Other Piping Material Description:</b>			
<b>Tank Contents:</b>			Gasoline
<b>Other Tank Contents Description:</b>			
<b>Tank #</b>	<b>#4</b>		
<b>Status:</b>	In Use		
<b>Status Date:</b>			
<b>Capacity:</b>	12000		
<b>Install Date:</b>	10/1/2001		
<b>Last Used Date:</b>			
<b>Above or Below Ground Tank:</b>	below		
<b>Unit ID:</b>			
<b>Construction Material:</b>	Composite (steel w/external FRP cladding)		
<b>Other Construction Material Description:</b>			
<b>Piping Material:</b>	FRP (fiberglass-reinforced plastic)		
<b>Other Piping Material Description:</b>			
<b>Tank Contents:</b>	Diesel		
<b>Other Tank Contents Description:</b>			

# Mapped Sites Details: LPST (MapID 23) *Commercial Property*



<b>Map ID #23</b>	<b>LPST - State/Tribal Leaking Storage Tank</b>		<b>Source: TCEQ</b>
<b>LPST ID: 114489</b>	<b>Facility ID: 0014670</b>		<b>Banks ID: 114489</b>
MONTALBANO TIRE CO INC 1302 HOUSTON AVE, HOUSTON, TX 77007 Contact: TONY MONTALBANO			Rel. Loc.: 0.4 miles S Elevation: 44.31 feet (-2.52) Soil Type: Vn
<b>Status:</b>	Final concurrence issued, case close		
<b>Leak Discovery Date:</b>	3/3/1999		
<b>Damage Description:</b>	assessment incomplete, no apparent receptors impacted		
<b>Tank #</b>	<b>#1</b>	<b>#2</b>	<b>#3</b>
<b>Status:</b>	Removed from Ground	Removed from Ground	Removed from Ground
<b>Status Date:</b>	2/23/1999	2/23/1999	2/23/1999
<b>Capacity:</b>	2000	3000	2000
<b>Install Date:</b>	1/1/1984	1/1/1952	1/1/1952
<b>Last Used Date:</b>			
<b>Above or Below Ground Tank:</b>	below	below	below
<b>Unit ID:</b>			
<b>Construction Material:</b>	Steel	Steel	Steel
<b>Other Construction Material Description:</b>			
<b>Piping Material:</b>			
<b>Other Piping Material Description:</b>	FRP		
<b>Tank Contents:</b>			
<b>Other Tank Contents Description:</b>			
<b>Tank #</b>	<b>#4</b>		
<b>Status:</b>	Removed from Ground		
<b>Status Date:</b>	2/23/1999		
<b>Capacity:</b>	500		
<b>Install Date:</b>	1/1/1952		
<b>Last Used Date:</b>			
<b>Above or Below Ground Tank:</b>	below		
<b>Unit ID:</b>			
<b>Construction Material:</b>	Steel		
<b>Other Construction Material Description:</b>			
<b>Piping Material:</b>			
<b>Other Piping Material Description:</b>			
<b>Tank Contents:</b>			
<b>Other Tank Contents Description:</b>			

**Mapped Sites Details: LPST (MapID 25)** *Commercial Property*



<b>Map ID #25</b>	<b>LPST - State/Tribal Leaking Storage Tank</b>	<b>Source: TCEQ</b>
<b>LPST ID: 106613</b>	<b>Facility ID: NA</b>	<b>Banks ID: 106613</b>
PIPE YARD		Rel. Loc.: 0.43 miles S
2313 OVID, HOUSTON, TX 77007		Elevation: 50.33 feet (+3.51)
Contact: CARL DURHAM		Soil Type: Ur
<b>Status:</b>	Final concurrence issued, case close	
<b>Leak Discovery Date:</b>	5/12/1993	
<b>Damage Description:</b>	minor soil contamination - does not require a rap	

**Mapped Sites Details: LPST (MapID 26) Commercial Property**



<b>Map ID #26</b>	<b>LPST - State/Tribal Leaking Storage Tank</b>		<b>Source: TCEQ</b>
<b>LPST ID: 110680</b>	<b>Facility ID: 0068345</b>		<b>Banks ID: 110680</b>
KING BISCUIT RESTAURANT 1606 WHITE OAK DR, HOUSTON, TX 77009 Contact: PATRICK QUINN			Rel. Loc.: 0.44 miles S Elevation: 40.58 feet (-6.24) Soil Type: An
<b>Status:</b>	Final concurrence issued, case close		
<b>Leak Discovery Date:</b>			
<b>Damage Description:</b>	impacted gw w/in 500ft-0.25mi to sw used by human, endangered species		
<b>Tank #</b>	<b>#1</b>	<b>#2</b>	<b>#3</b>
<b>Status:</b>	Perm. Filled in Place	Perm. Filled in Place	Perm. Filled in Place
<b>Status Date:</b>	12/31/1985	12/31/1985	12/31/1985
<b>Capacity:</b>	2000	4000	5000
<b>Install Date:</b>	12/31/1927	12/31/1927	12/31/1927
<b>Last Used Date:</b>			
<b>Above or Below Ground Tank:</b>	below	below	below
<b>Unit ID:</b>			
<b>Construction Material:</b>	Steel	Steel	Steel
<b>Other Construction Material Description:</b>			
<b>Piping Material:</b>			
<b>Other Piping Material Description:</b>			
<b>Tank Contents:</b>			
<b>Other Tank Contents Description:</b>			

**Mapped Sites Details: LPST (MapID 28) Commercial Property**

<b>Map ID #28</b>	<b>LPST - State/Tribal Leaking Storage Tank</b>		<b>Source: TCEQ</b>
<b>LPST ID: 117688</b>	<b>Facility ID: 0049151</b>		<b>Banks ID: 117688</b>
N MERFISH SUPPLY CO 1818 CENTER ST, HOUSTON, TX 77007 Contact: FRANK LIU			Rel. Loc.: 0.49 miles S Elevation: 51.04 feet (+4.22) Soil Type: Ur
<b>Status:</b>	Final concurrence pending documentation of well plugging		
<b>Leak Discovery Date:</b>	2/22/1995		
<b>Damage Description:</b>	assessment incomplete, no apparent receptors impacted		
<b>Tank #</b>	<b>#2</b>	<b>#3</b>	
<b>Status:</b>	Removed from Ground	Removed from Ground	
<b>Status Date:</b>	2/22/1995	2/22/1995	
<b>Capacity:</b>	5000	1000	
<b>Install Date:</b>	1/1/1962	8/31/1987	
<b>Last Used Date:</b>			
<b>Above or Below Ground Tank:</b>	below	below	
<b>Unit ID:</b>			
<b>Construction Material:</b>	Steel	Steel	
<b>Other Construction Material Description:</b>			
<b>Piping Material:</b>	Steel	Steel	
<b>Other Piping Material Description:</b>			
<b>Tank Contents:</b>			
<b>Other Tank Contents Description:</b>			

**End of LPST Sites Section**

## Mapped Sites Details: PST (MapID 2) Commercial Property



## PST - State/Tribal Storage Tank

<b>Map ID #2</b>	<b>PST - State/Tribal Storage Tank</b>		<b>Source: TCEQ</b>
<b>Facility #: 0067236</b>	<b>TCEQ Customer ID: 101712</b>		<b>Banks ID: 0067236</b>
CLEATIS A RYMAN 1917 HOUSTON Ave, HOUSTON, TX 77007 Contact: C A Ryman			Rel. Loc.: 0.12 miles S Elevation: 44.03 feet (-2.79) Soil Type: Vn
<b>Number of ASTs:</b>	0000		
<b>Number of USTs:</b>	0002		
<b>Tank #</b>	<b>#1</b>	<b>#2</b>	
<b>Status:</b>	Removed from Ground	Removed from Ground	
<b>Status Date:</b>	10/30/1995	10/30/1995	
<b>Capacity:</b>	1000	5000	
<b>Install Date:</b>	12/31/1981	12/31/1981	
<b>Last Used Date:</b>			
<b>Above or Below Ground Tank:</b>	below	below	
<b>Unit ID:</b>			
<b>Construction Material:</b>	Steel	Steel	
<b>Other Construction Material Description:</b>			
<b>Piping Material:</b>	Steel	Steel	
<b>Other Piping Material Description:</b>			
<b>Tank Contents:</b>			
<b>Other Tank Contents Description:</b>			

# Mapped Sites Details: PST (MapID 3) *Commercial Property*



<b>Map ID #3</b>	<b>PST - State/Tribal Storage Tank</b>		<b>Source: TCEQ</b>
<b>Facility #: 0010677</b>	<b>TCEQ Customer ID: 050005</b>		<b>Banks ID: 0010677</b>
SPRING STREET REALTY 1824 SPRING ST, HOUSTON, TX 77007 Contact: DEBBIE MCKINLEY			Rel. Loc.: 0.13 miles S Elevation: 50.86 feet (+4.04) Soil Type: Ur
<b>Number of ASTs:</b>	0000		
<b>Number of USTs:</b>	0005		
<b>Tank #</b>	<b>#1</b>	<b>#1</b>	<b>#2</b>
<b>Status:</b>	Removed from Ground	Removed from Ground	Removed from Ground
<b>Status Date:</b>	5/9/1991	5/28/2010	5/9/1991
<b>Capacity:</b>	6000	10000	7800
<b>Install Date:</b>	1/1/1956	5/1/1991	1/1/1981
<b>Last Used Date:</b>			
<b>Above or Below Ground Tank:</b>	below	below	below
<b>Unit ID:</b>			
<b>Construction Material:</b>	Steel	FRP (fiberglass-reinforced plastic)	FRP (fiberglass-reinforced plastic)
<b>Other Construction Material Description:</b>			
<b>Piping Material:</b>	Steel	FRP (fiberglass-reinforced plastic)	Steel
<b>Other Piping Material Description:</b>			
<b>Tank Contents:</b>			
<b>Other Tank Contents Description:</b>			
<b>Tank #</b>	<b>#2</b>	<b>#3</b>	
<b>Status:</b>	Removed from Ground	Removed from Ground	
<b>Status Date:</b>	5/28/2010	5/9/1991	
<b>Capacity:</b>	10000	7300	
<b>Install Date:</b>	5/1/1991	1/1/1981	
<b>Last Used Date:</b>			
<b>Above or Below Ground Tank:</b>	below	below	
<b>Unit ID:</b>			
<b>Construction Material:</b>	FRP (fiberglass-reinforced plastic)	FRP (fiberglass-reinforced plastic)	
<b>Other Construction Material Description:</b>			
<b>Piping Material:</b>	FRP (fiberglass-reinforced plastic)	Steel	
<b>Other Piping Material Description:</b>			
<b>Tank Contents:</b>			
<b>Other Tank Contents Description:</b>			



**Mapped Sites Details: PST (MapID 6) Commercial Property**

<b>Map ID #6</b>	<b>PST - State/Tribal Storage Tank</b>		<b>Source: TCEQ</b>
<b>Facility #: 0034824</b>	<b>TCEQ Customer ID: 067260</b>		<b>Banks ID: 0034824</b>
C & L SUPPLY SUPERVISORY SERV 2018 HOUSTON AVE, HOUSTON, TX 77007 Contact: JAMES EAST			Rel. Loc.: 0.14 miles S Elevation: 42.24 feet (-4.58) Soil Type: Vn
<b>Number of ASTs:</b>	0000		
<b>Number of USTs:</b>	0002		
<b>Tank #</b>	<b>#1</b>	<b>#2</b>	
<b>Status:</b>	Removed from Ground	Removed from Ground	
<b>Status Date:</b>	9/5/1991	9/5/1991	
<b>Capacity:</b>	2000	2000	
<b>Install Date:</b>	5/1/1979	5/1/1979	
<b>Last Used Date:</b>			
<b>Above or Below Ground Tank:</b>	below	below	
<b>Unit ID:</b>			
<b>Construction Material:</b>	Steel	Steel	
<b>Other Construction Material Description:</b>			
<b>Piping Material:</b>	Steel	Steel	
<b>Other Piping Material Description:</b>			
<b>Tank Contents:</b>			
<b>Other Tank Contents Description:</b>			

**Mapped Sites Details: PST (MapID 8) Commercial Property**

<b>Map ID #8</b>	<b>PST - State/Tribal Storage Tank</b>	<b>Source: TCEQ</b>
<b>Facility #: 0062261</b>	<b>TCEQ Customer ID: 092457</b>	<b>Banks ID: 0062261</b>
KRC ENTERPRISE INC 1802 CROCKETT, HOUSTON, TX 77007 Contact: C G LATHAM		Rel. Loc.: 0.15 miles S Elevation: 49.85 feet (+3.03) Soil Type: Vn
<b>Number of ASTs:</b>	0000	
<b>Number of USTs:</b>	0001	
<b>Tank #</b>	<b>#1</b>	
<b>Status:</b>	Removed from Ground	
<b>Status Date:</b>	12/30/1991	
<b>Capacity:</b>	2000	
<b>Install Date:</b>	8/31/1987	
<b>Last Used Date:</b>		
<b>Above or Below Ground Tank:</b>	below	
<b>Unit ID:</b>		
<b>Construction Material:</b>	Steel	
<b>Other Construction Material Description:</b>		
<b>Piping Material:</b>	Steel	
<b>Other Piping Material Description:</b>		
<b>Tank Contents:</b>		
<b>Other Tank Contents Description:</b>		

**Mapped Sites Details: PST (MapID 9) Commercial Property**



<b>Map ID #9</b>	<b>PST - State/Tribal Storage Tank</b>		<b>Source: TCEQ</b>
<b>Facility #: 0005221</b>	<b>TCEQ Customer ID: 073126</b>		<b>Banks ID: 0005221</b>
TRI-GAS			Rel. Loc.: 0.17 miles S
2200 HOUSTON AVE, HOUSTON, TX 77007			Elevation: 40.17 feet (-6.66)
Contact: FRANK FIRE			Soil Type: Vn
<b>Number of ASTs:</b>			0001
<b>Number of USTs:</b>			0001
<b>Tank #</b>	<b>#1</b>	<b>#1</b>	
<b>Status:</b>	In use	Removed from Ground	
<b>Status Date:</b>		5/27/1994	
<b>Capacity:</b>	0002000	8000	
<b>Install Date:</b>	5/1/1994	1/1/1975	
<b>Last Used Date:</b>			
<b>Above or Below Ground Tank:</b>	above	below	
<b>Unit ID:</b>	00174458		
<b>Construction Material:</b>	Steel	Steel	
<b>Other Construction Material Description:</b>			
<b>Piping Material:</b>		Steel	
<b>Other Piping Material Description:</b>			
<b>Tank Contents:</b>			
<b>Other Tank Contents Description:</b>			

**Mapped Sites Details: PST (MapID 10) Commercial Property**

<b>Map ID #10</b>	<b>PST - State/Tribal Storage Tank</b>		<b>Source: TCEQ</b>
<b>Facility #: 0064975</b>	<b>TCEQ Customer ID: 096534</b>		<b>Banks ID: 0064975</b>
LA CHARRA NEGRA 1800 HOUSTON AVE, HOUSTON, TX 77007 Contact: R THOMAS			Rel. Loc.: 0.18 miles S Elevation: 45.27 feet (-1.55) Soil Type: Vn
<b>Number of ASTs:</b>	0000		
<b>Number of USTs:</b>	0002		
<b>Tank #</b>	<b>#1</b>	<b>#2</b>	
<b>Status:</b>	In Use	In Use	
<b>Status Date:</b>			
<b>Capacity:</b>	0	0	
<b>Install Date:</b>	8/31/1987	8/31/1987	
<b>Last Used Date:</b>			
<b>Above or Below Ground Tank:</b>	below	below	
<b>Unit ID:</b>			
<b>Construction Material:</b>			
<b>Other Construction Material Description:</b>			
<b>Piping Material:</b>			
<b>Other Piping Material Description:</b>			
<b>Tank Contents:</b>	Gasoline	Gasoline	
<b>Other Tank Contents Description:</b>			

## Mapped Sites Details: PST (MapID 12) Commercial Property



<b>Map ID #12</b>	<b>PST - State/Tribal Storage Tank</b>		<b>Source: TCEQ</b>
<b>Facility #: 0036666</b>	<b>TCEQ Customer ID: 068209</b>		<b>Banks ID: 0036666</b>
MARTIN POULTRY EGG & FROZEN FOOD 2002 WHITE ST, HOUSTON, TX 77007 Contact: MICHAEL TAPIEK			Rel. Loc.: 0.23 miles S Elevation: 51.87 feet (+5.05) Soil Type: Ur
<b>Number of ASTs:</b>	0001		
<b>Number of USTs:</b>	0002		
<b>Tank #</b>	<b>#1</b>	<b>#1</b>	<b>#2</b>
<b>Status:</b>	Out of use	Removed from Ground	Removed from Ground
<b>Status Date:</b>		8/29/1991	8/29/1991
<b>Capacity:</b>	0006000	0	0
<b>Install Date:</b>	1/1/1991	8/31/1987	8/31/1987
<b>Last Used Date:</b>	3/30/1997		
<b>Above or Below Ground Tank:</b>	above	below	below
<b>Unit ID:</b>	00153753		
<b>Construction Material:</b>	Steel	FRP (fiberglass-reinforced plastic)	Steel
<b>Other Construction Material Description:</b>			
<b>Piping Material:</b>			
<b>Other Piping Material Description:</b>			
<b>Tank Contents:</b>			
<b>Other Tank Contents Description:</b>			

**Mapped Sites Details: PST (MapID 13) Commercial Property**

<b>Map ID #13</b>	<b>PST - State/Tribal Storage Tank</b>		<b>Source: TCEQ</b>
<b>Facility #: 0023607</b>	<b>TCEQ Customer ID: 038268</b>		<b>Banks ID: 0023607</b>
THE CECO CORPORATION 1902 WEBER ST, HOUSTON, TX 77007 Contact: R W WALL			Rel. Loc.: 0.25 miles S Elevation: 46.86 feet (+.04) Soil Type: Ur
<b>Number of ASTs:</b>			0
<b>Number of USTs:</b>			2
<b>Tank #</b>	<b>#1</b>	<b>#2</b>	
<b>Status:</b>	Removed from Ground	Removed from Ground	
<b>Status Date:</b>	10/26/1992	10/26/1992	
<b>Capacity:</b>	8000	2000	
<b>Install Date:</b>	1/1/1971	1/1/1971	
<b>Last Used Date:</b>			
<b>Above or Below Ground Tank:</b>	below	below	
<b>Unit ID:</b>			
<b>Construction Material:</b>	Steel	Steel	
<b>Other Construction Material Description:</b>			
<b>Piping Material:</b>	Steel	Steel	
<b>Other Piping Material Description:</b>			
<b>Tank Contents:</b>			
<b>Other Tank Contents Description:</b>			

**End of PST Sites Section**

**Mapped Sites Details: VCP (MapID 3) Commercial Property****VCP - State/Tribal Voluntary Cleanup**

<b>Map ID #3</b>	<b>VCP - State/Tribal Voluntary Cleanup</b>	<b>Source: TCEQ</b>
<b>VCP ID: 2322</b>	<b>EPA Texas ID/Registration #: NA</b>	<b>Banks ID: VCP_002322</b>
Former Harris Moving & Storage 1824 Spring St., Houston, TX 77007		Rel. Loc.: 0.13 miles S Elevation: 50.86 feet (+4.04)
Contact:		Soil Type: Ur
<b>Status:</b>	Investigation	
<b>Receive Date:</b>	5/20/2010	
<b>Completion Date - Certificate Issued:</b>		
<b>Facility Type:</b>	Commercial Trucking Facility	
<b>Acres:</b>	2.4	
<b>Applicant:</b>	TDC Realty, LLC	
<b>Institutional Controls:</b>		
<b>Site Contamination Information:</b>	VOCs, TPH	
<b>Media Affected:</b>	Groundwater	
<b>Owner Name:</b>	Jon Deal	
<b>Owner Phone:</b>	713-993-9833	
<b>Additional Information:</b>	Remedy:	

**Mapped Sites Details: VCP (MapID 7) Commercial Property**

<b>Map ID #7</b>	<b>VCP - State/Tribal Voluntary Cleanup</b>	<b>Source: TCEQ</b>
<b>IOP ID: 353</b>	<b>VCP ID: NA</b>	<b>Banks ID: IOP_000353</b>
North Houston Avenue Vacant Lot		Rel. Loc.: 0.15 miles S
1819 Houston Avenue, Houston, TX 77007-4141		Elevation: 47.32 feet (+.5)
Contact:		Soil Type: Vn
<b>Status:</b>	Withdrawal	
<b>Receive Date:</b>	4/11/2003	
<b>Completion Date - Certificate Issued:</b>		
<b>Facility Type:</b>	Vacant Property	
<b>Acres:</b>	0.833	
<b>Applicant:</b>	Zapar Mohammed	
<b>Institutional Controls:</b>		
<b>Site Contamination Information:</b>	VOCs, TPH	
<b>Media Affected:</b>	Groundwater	
<b>Owner Name:</b>		
<b>Owner Phone:</b>		
<b>Additional Information:</b>		



**Mapped Sites Details: VCP (MapID 11) Commercial Property**

<b>Map ID #11</b>	<b>VCP - State/Tribal Voluntary Cleanup</b>	<b>Source: TCEQ</b>
<b>IOP ID: 533</b>	<b>VCP ID: NA</b>	<b>Banks ID: IOP_000533</b>
1402 Crockett		Rel. Loc.: 0.22 miles S
1402 Crockett, Houston, TX 77007		Elevation: 42.7 feet (-4.13)
Contact:		Soil Type: Vn
<b>Status:</b>	Completed	
<b>Receive Date:</b>	2/2/2006	
<b>Completion Date - Certificate Issued:</b>	7/26/2006	
<b>Facility Type:</b>	Undeveloped Property	
<b>Acres:</b>	0.344	
<b>Applicant:</b>	Prime Texas Investments, Inc.	
<b>Institutional Controls:</b>		
<b>Site Contamination Information:</b>	VOCs, TPH	
<b>Media Affected:</b>	Soils/Groundwater	
<b>Owner Name:</b>		
<b>Owner Phone:</b>		
<b>Additional Information:</b>		

**Mapped Sites Details: VCP (MapID 17) Commercial Property**

<b>Map ID #17</b>	<b>VCP - State/Tribal Voluntary Cleanup</b>	<b>Source: TCEQ</b>
<b>VCP ID: 709</b>	<b>EPA Texas ID/Registration #: TXD010790046</b>	<b>Banks ID: VCP_000709</b>
Turco Products, Inc. 1606 Henderson Street, Houston, TX		Rel. Loc.: 0.33 miles S Elevation: 56.05 feet (+9.23)
Contact:		Soil Type: Vn
<b>Status:</b>	Investigation	
<b>Receive Date:</b>	2/25/1998	
<b>Completion Date - Certificate Issued:</b>		
<b>Facility Type:</b>	Industrial Cleaning/Detergents Plant	
<b>Acres:</b>	1.4	
<b>Applicant:</b>	Akema, Inc.	
<b>Institutional Controls:</b>		
<b>Site Contamination Information:</b>	TPH, VOCs, Metals	
<b>Media Affected:</b>	Soils	
<b>Owner Name:</b>	Joseph T. Clifford, P.E.	
<b>Owner Phone:</b>	215-491-5552	
<b>Additional Information:</b>	Remedy:	

**Mapped Sites Details: VCP (MapID 18)** *Commercial Property*

<b>Map ID #18</b>	<b>VCP - State/Tribal Voluntary Cleanup</b>	<b>Source: TCEQ</b>
<b>VCP ID: 1672</b>	<b>EPA Texas ID/Registration #: NA</b>	<b>Banks ID: VCP_001672</b>
Wenco Distributors 1615 Dart Street, Houston, TX 77007-4025		Rel. Loc.: 0.37 miles S Elevation: 50.46 feet (+3.64)
Contact:		Soil Type: Ur
<b>Status:</b>	Investigation	
<b>Receive Date:</b>	12/31/2003	
<b>Completion Date - Certificate Issued:</b>		
<b>Facility Type:</b>	Door and Window Manufacturing	
<b>Acres:</b>	3.849	
<b>Applicant:</b>	1610 Dart Partners, LP	
<b>Institutional Controls:</b>		
<b>Site Contamination Information:</b>	VOCs, Metals, TPH	
<b>Media Affected:</b>	Soils/Groundwater	
<b>Owner Name:</b>	Avi Ron	
<b>Owner Phone:</b>	713-869-4815	
<b>Additional Information:</b>	Remedy:	

**Mapped Sites Details: VCP (MapID 24)** *Commercial Property*



<b>Map ID #24</b>	<b>VCP - State/Tribal Voluntary Cleanup</b>	<b>Source: TCEQ</b>
<b>IOP ID: 837</b>	<b>VCP ID: NA</b>	<b>Banks ID: IOP_000837</b>
Riviana Foods, Inc. 1702 Taylor St., Houston, TX 77007 Contact:		Rel. Loc.: 0.42 miles S Elevation: 52.63 feet (+5.81) Soil Type: Vn
<b>Status:</b>	Investigation	
<b>Receive Date:</b>	8/15/2012	
<b>Completion Date - Certificate Issued:</b>		
<b>Facility Type:</b>	Commercial Industrial	
<b>Acres:</b>	10	
<b>Applicant:</b>	Riviana Foods, Inc.	
<b>Institutional Controls:</b>		
<b>Site Contamination Information:</b>	VOCs, SVOCs, Chlorinated Solvents	
<b>Media Affected:</b>	Groundwater	
<b>Owner Name:</b>		
<b>Owner Phone:</b>		
<b>Additional Information:</b>		

**Mapped Sites Details: VCP (MapID 27) Commercial Property**

<b>Map ID #27</b>	<b>VCP - State/Tribal Voluntary Cleanup</b>	<b>Source: TCEQ</b>
<b>VCP ID: 1967</b>	<b>EPA Texas ID/Registration #: NA</b>	<b>Banks ID: VCP_001967</b>
Triple D Uniform Supply 1216 Houston Avenue, Houston, TX 77007-6234		Rel. Loc.: 0.46 miles S Elevation: 43.83 feet (-2.99)
Contact:		Soil Type: Vn
<b>Status:</b>	Investigation	
<b>Receive Date:</b>	8/30/2006	
<b>Completion Date - Certificate Issued:</b>		
<b>Facility Type:</b>	Commercial Uniform Rental	
<b>Acres:</b>	1.126	
<b>Applicant:</b>	1216 Houston Ave., Ltd.	
<b>Institutional Controls:</b>		
<b>Site Contamination Information:</b>	VOCs, Chlorinated Solvents, TPH	
<b>Media Affected:</b>	Groundwater	
<b>Owner Name:</b>	Irene Cruden	
<b>Owner Phone:</b>	713-961-3877	
<b>Additional Information:</b>	Remedy:	

**Mapped Sites Details: VCP (MapID 29) Commercial Property**

<b>Map ID #29</b>	<b>VCP - State/Tribal Voluntary Cleanup</b>	<b>Source: TCEQ</b>
<b>VCP ID: 1772</b>	<b>EPA Texas ID/Registration #: NA</b>	<b>Banks ID: VCP_001772</b>
Affordable Feed and Tack 1802 Center Street, Houston, TX 77007-6103 Contact:		Rel. Loc.: 0.49 miles S Elevation: 50.06 feet (+3.24) Soil Type: Ur
<b>Status:</b>	Completed	
<b>Receive Date:</b>	12/30/2004	
<b>Completion Date - Certificate Issued:</b>	3/13/2009	
<b>Facility Type:</b>	Warehouse Complex	
<b>Acres:</b>	4.3085	
<b>Applicant:</b>	Kansas Katy II Aliezer Interest	
<b>Institutional Controls:</b>		
<b>Site Contamination Information:</b>	VOCs, SVOCs, Metals, TPH	
<b>Media Affected:</b>	Soils/Groundwater	
<b>Owner Name:</b>	Ron Aliezer	
<b>Owner Phone:</b>	713-660-6664	
<b>Additional Information:</b>	Remedy:	

**End of VCP Sites Section**

**Mapped Sites Details: HW (MapID 4) Commercial Property****HW - State/Tribal Hazardous Waste**

<b>Map ID #4</b>	<b>HW - State/Tribal Hazardous Waste</b>	<b>Source: TCEQ</b>
<b>Register #: 68510</b>	<b>EPA ID: TXD102696036</b>	<b>Banks ID: 68510</b>
PPG INDUSTRIES 1601 ENVIRONMENTAL 2211 Sabine St, Houston, TX 77007 Contact: CHRISTINE BABKA		Rel. Loc.: 0.13 miles S Elevation: 50.61 feet (+3.79) Soil Type: Ur
<b>Status:</b>	INACTIVE	
<b>Waste Description:</b>		
<b>Location Description:</b>	2211 Sabine St, Houston, TX	
<b>Additional State ID:</b>	23457	
<b>Permit Number:</b>		
<b>Business Type:</b>	Corporation	
<b>Facility Type:</b>		
<b>Facility Owner Name:</b>	PPG INDUSTRIES INC	
<b>Facility Owner Phone:</b>	1-412-9635827	
<b>Facility Contact Name:</b>		
<b>Facility Contact Phone:</b>		
<b>Company Name:</b>	PPG INDUSTRIES INC	
<b>Operator Address:</b>	260 KAPPA DR, PITTSBURGH, PA 15238	

# Mapped Sites Details: HW (MapID 5) Commercial Property



<b>Map ID #5</b>	<b>HW - State/Tribal Hazardous Waste</b>		<b>Source: TCEQ</b>		
<b>Register #: 81983</b>	<b>EPA ID: TX0000132142</b>		<b>Banks ID: 81983</b>		
HALLIBURTON ENERGY SERVICES 1907 SABINE ST, HOUSTON, TX 77007 Contact: LISA REYNA			Rel. Loc.: 0.14 miles S Elevation: 49.89 feet (+3.07) Soil Type: Vn		
<b>Status:</b>	ACTIVE				
<b>Waste Description:</b>					
<b>Location Description:</b>	1907 Sabine, Houston, TX				
<b>Additional State ID:</b>	37087				
<b>Permit Number:</b>					
<b>Business Type:</b>	Corporation				
<b>Facility Type:</b>					
<b>Facility Owner Name:</b>	HALLIBURTON ENERGY SERVICES INC				
<b>Facility Owner Phone:</b>	1-281-5754220				
<b>Facility Contact Name:</b>					
<b>Facility Contact Phone:</b>					
<b>Company Name:</b>	HALLIBURTON ENERGY SERVICES INC				
<b>Operator Address:</b>	1815 SHEARN ST, HOUSTON, TX 77007				
Waste ID	Waste Code	Waste Description	Disposal Method	Storage Method	Total Annual Waste (lbs)
242703	00224062	RCRA empty containers/general cleanup-daily trash.			
80456	00033072	Scrap metal turnings, shavings; Initial waste code determination used in incorre			
156670	00314971	PCB CONTAINING ELECTRICAL EQUIPMENT; Initial waste code determination used in inc			
188221	00322051	Coolant oil and water emulsion used generated when steel parts are machined and ma			
205096	0034307H	waste ostalloy; One time shipment.			
242705	00244971	PCB Containing Electrical equipment			
242708	0027204H	residual liquids from aerosol can punch			
242709	00282031	Spent mineral spirits. Cleaning of equipment used to make screen products.			
80457	00022072	Scrap steel for recycling/wire works wire shaping, wrapping, excess damaged fabr			
80462	00102062	Hydraulic oil/hydraulic press/1975			
80463	00092062	Compressor oil/air compressors for house air/1975			
80465	00044882	Scrap lumber/excess-damaged lumber from box building, for shipment/1975 Waste i			
80468	0017109H	Spent caustic/dip tank cleaning of dynadraw/1975 Waste inactivated due to produc			
188222	00333101	used absorbents generated from absorbents (pads and booms) used to clean up(coll			
205097	0035204H	residual liquids from aerosol can punch; Initial waste code determination used i			
80458	00052062	Cutting oils/fitting mfg., stainless steel or carbon steels, band saw cutting/19			
80459	00062062	Water soluble cooling oil/turk head shaping/1975			
80460	00072062	Gear oil/draw works lubricant reduce diameter of wire/1975			
80466	0016106H	Caustic solution with metal, chromium/dip tank cleaning to remove dynadraw/1975			
80472	00151051	Spent acid with metals, chromium			
80475	0014104H	Spent acid/screen cleaning/1975			
80477	0013103H	Acid/screen cleaning/1975 Waste inactivated due to product change.			
80478	0020310H	Spent solid filters with chromium/waste water pretreatment/1975			
80480	00181101				



## Mapped Sites Details: HW (MapID 5) Commercial Property



Continued from Previous Page

		Rinse water/dip tank acid and caustic rinse to wash off acid solution or caustic
89785	05572031	spent mineral spirits. Cleaning of equipment used to make metal screen products;
149330	00212061	Used Oil
149331	00309992	Plant Trash; Initial waste code determination used in incorrect form and/or class
242702	00013072	Scrap metal turnings and shavings generated from a product process or service ac
242704	00239992	Plant trash
242706	00252051	Coolant oil and water emulsion used generated when steel parts are machined and m
242707	00263101	Used absorbents generated from absorbent pad and booms used to clean up (collect
80461	00082062	30W oil/Lubricate Lead Screen on Wire Wrap Machine/1975
80464	00114892	Floor sweep with oil contamination/general maintenance, spill response-cleanup/1
80467	00191141	Waste water/cooling process water, general maintenance, rinse water, dip tank wa
80481	00124062	RCRA empty containers/general cleanup-daily trash/1975; Initial waste codedeterm

**Mapped Sites Details: HW (MapID 14) Commercial Property**

<b>Map ID #14</b>	<b>HW - State/Tribal Hazardous Waste</b>	<b>Source: TCEQ</b>
<b>Register #: 40149</b>	<b>EPA ID: TXD980629760</b>	<b>Banks ID: 40149</b>
KWIKFORM AMERICA 1614 HOUSTON AVE, HOUSTON, TX 77007 Contact: EDWARD ADKINS		Rel. Loc.: 0.25 miles S Elevation: 45.6 feet (-1.22) Soil Type: Vn
<b>Status:</b>	INACTIVE	
<b>Waste Description:</b>		
<b>Location Description:</b>		
<b>Additional State ID:</b>	16571	
<b>Permit Number:</b>		
<b>Business Type:</b>	Unknown	
<b>Facility Type:</b>		
<b>Facility Owner Name:</b>	KWIKFORM AMERICA INC	
<b>Facility Owner Phone:</b>	1-713-4758433	
<b>Facility Contact Name:</b>		
<b>Facility Contact Phone:</b>		
<b>Company Name:</b>	KWIKFORM AMERICA INC	
<b>Operator Address:</b>	PO BOX 4352, PASADENA, TX 77502	

**End of HW Sites Section**

**Mapped Sites Details: RCRA (MapID 4) Commercial Property**



**RCRA - RCRA**

**Map ID #4** **RCRA - RCRA** **Source: EPA**

**EPA Handler ID: TXD102696036** **Handler Sequence Number: 2** **Banks ID: TXD102696036**

PPG INDUSTIRES INC Rel. Loc.: 0.13 miles S  
 2211 SABINE ST, HOUSTON, TX 77007 Elevation: 50.61 feet (+3.79)  
 Contact: CHRISTINE BABKA Soil Type: Ur

**Owner Name:** PPG INDUSTIRES INC  
**Number of Owners:** 1  
**Operator Name:** PPG INDUSTIRES INC  
**Number of Operators:** 1  
**Mailing Address:** 260 KAPPA DR, PITTSBURG, PA 15238  
**Contact Name:** CHRISTINE BABKA  
**Contact Address:** 260 KAPPA DR, PITTSBURG, PA 15238  
**Contact Phone:** 412-963-5827  
**Contact Email Address:**

**Government Performance and Results Act (GPRA) Permit:** The facility does not exist on the Operating/Post-Closure Permit Baseline.  
**Government Performance and Results Act (GPRA) Corrective Action:** No

**Workload Legend: L=Land Disposal I=Incineration B=Boiler/Industrial Furnace S=Storage T=Treatment**

**Permit Workload:** -----  
**Closure Workload:** -----  
**Post-Closure Workload:** -----  
**Subject to Corrective Action:** No  
**Subject to Corrective Action 3004:** No  
**Subject to Corrective Action Non-TSDF:** No  
**Corrective Action Workload:** No  
**Generator Status:** Not a Generator  
**Nuclear Mixed Waste Handler:** No  
**Onsite Burner Exemption:** No  
**Furnace Exemption:** No  
**Underground Injection Activity:** No  
**NAIC Description 1:**  
**NAIC Description 2:**  
**NAIC Description 3:**  
**NAIC Description 4:**  
**Federal Generator Class:** Not a Generator, Verified  
**State Generator Class:**  
**Environmental Controls in Place:** No  
**Institutional Controls in Place:** No  
**Groundwater Controls in Place:** No  
**Significant Non-Compliance:** No  
**Unaddressed Significant Non-Complier:** No  
**Addressed Significant Non-Complier:** No  
**Significant Non-Complier with Compliance Schedule:** No

Enforcement Description	Responsible Enforcement Agency	Enforcement Date	Penalty Description
-------------------------	--------------------------------	------------------	---------------------

Evaluation Description	Responsible Agency	Evaluation Date	Violation Found
------------------------	--------------------	-----------------	-----------------

Violation Description	Violation Determined By	Violation Date	Actual Resolution Date	Scheduled Resolution Date
-----------------------	-------------------------	----------------	------------------------	---------------------------

**Hazardous Waste Description**  
 DESCRIPTION  
 IGNITABLE WASTE

**Mapped Sites Details: RCRA (MapID 14) Commercial Property**



<b>Map ID #14</b>	<b>RCRA - RCRA</b>	<b>Source: EPA</b>		
<b>EPA Handler ID: TXD980629760</b>	<b>Handler Sequence Number: 2</b>	<b>Banks ID: TXD980629760</b>		
KWIKFORM AMERICA INC 1614 S HOUSTON RD, HOUSTON, TX 77002 Contact: EDWARD ADKINS		Rel. Loc.: 0.25 miles S Elevation: 45.6 feet (-1.22) Soil Type: Vn		
<b>Owner Name:</b>	KWIKFORM AMERICA INC			
<b>Number of Owners:</b>	1			
<b>Operator Name:</b>	KWIKFORM AMERICA INC			
<b>Number of Operators:</b>	1			
<b>Mailing Address:</b>	PO BOX 4352, PASADENA, TX 77502			
<b>Contact Name:</b>	EDWARD ADKINS			
<b>Contact Address:</b>	PO BOX 4352, PASADENA, TX 77502			
<b>Contact Phone:</b>	713-475-8433			
<b>Contact Email Address:</b>				
<b>Government Performance and Results Act (GPRA) Permit:</b>	The facility does not exist on the Operating/Post-Closure Permit Baseline.			
<b>Government Performance and Results Act (GPRA) Corrective Action:</b>	No			
<b>Workload Legend: L=Land Disposal I=Incineration B=Boiler/Industrial Furnace S=Storage T=Treatment</b>				
<b>Permit Workload:</b>	-----			
<b>Closure Workload:</b>	-----			
<b>Post-Closure Workload:</b>	-----			
<b>Subject to Corrective Action:</b>	No			
<b>Subject to Corrective Action 3004:</b>	No			
<b>Subject to Corrective Action Non-TSDF:</b>	No			
<b>Corrective Action Workload:</b>	No			
<b>Generator Status:</b>	Not a Generator			
<b>Nuclear Mixed Waste Handler:</b>	No			
<b>Onsite Burner Exemption:</b>	No			
<b>Furnace Exemption:</b>	No			
<b>Underground Injection Activity:</b>	No			
<b>NAIC Description 1:</b>	General Freight Trucking, Local			
<b>NAIC Description 2:</b>				
<b>NAIC Description 3:</b>				
<b>NAIC Description 4:</b>				
<b>Federal Generator Class:</b>	Not a Generator, Verified			
<b>State Generator Class:</b>				
<b>Environmental Controls in Place:</b>	No			
<b>Institutional Controls in Place:</b>	No			
<b>Groundwater Controls in Place:</b>	No			
<b>Significant Non-Compliance:</b>	No			
<b>Unaddressed Significant Non-Complier:</b>	No			
<b>Addressed Significant Non-Complier:</b>	No			
<b>Significant Non-Complier with Compliance Schedule:</b>	No			
<b>Enforcement Description</b>	<b>Responsible Enforcement Agency</b>	<b>Enforcement Date</b>	<b>Penalty Description</b>	
<b>Evaluation Description</b>	<b>Responsible Agency</b>	<b>Evaluation Date</b>	<b>Violation Found</b>	
<b>Violation Description</b>	<b>Violation Determined By</b>	<b>Violation Date</b>	<b>Actual Resolution Date</b>	<b>Scheduled Resolution Date</b>
<b>Hazardous Waste Description</b>				
CORROSIVE WASTE DESCRIPTION				

*Continued from Previous Page*

**End of RCRA Sites Section**

# Dataset Descriptions and Sources *Commercial Property*



Dataset	Source	Dataset Description	Update Schedule	Data Requested	Data Obtained	Data Updated	Source Updated
<b>NPL -- National Priority List</b>	EPA	NPL is the list of high priority hazardous waste sites in the United States eligible for long-term remedial action financed under the federal Superfund program and CERCLIS. Also known as Superfund sites, the EPA will only add sites to the NPL list based upon completion of the Hazard Ranking System (HRS) screening, public solicitation of comments about the proposed site, and after all comments have been addressed.	Quarterly	03/11/2013	04/24/2013	04/24/2013	01/31/2012
<b>DNPL -- Delisted National Priority List</b>	EPA	DNPL is a list of all sites that have been deleted from the EPA NPL list. These sites are taken off the NPL list usually due to no further response or remedial action being required on them. Notices to delete NPL sites are published in the Federal Register and become effective unless the EPA receives significant adverse or critical comments during the 30-day public comment period.	Quarterly	03/11/2013	04/24/2013	04/24/2013	01/31/2012
<b>CER -- CERCLIS</b>	EPA	CERCLIS sites come from the Comprehensive Environmental Response, Compensation, and Liability Act, a federal law designed to clean up abandoned hazardous waste sites. These sites are either proposed, listed or under review currently to be a part of the National Priority List.	Quarterly	03/11/2013	04/24/2013	04/24/2013	01/31/2012
<b>CER NFRAP -- CERCLIS NFRAP</b>	EPA	CERCLIS sites designated 'No Further Remedial Action Planned' NFRAP have been removed from CERCLIS. NFRAP sites may be sites where, following an initial investigation, no contamination was found, contamination was removed quickly without the site being placed on the NPL, or the contamination was not serious enough to require Federal Superfund action or NPL consideration.	Quarterly	03/11/2013	04/24/2013	04/24/2013	01/31/2012
<b>RCRA COR -- RCRA CORRACTS</b>	EPA	These sites are registered hazardous waste generators or handlers that fall under the Resource Conservation and Recovery Act (RCRA), and subject to corrective action activity.	Quarterly	06/07/2013	06/07/2013	06/08/2013	05/09/2013
<b>RCRA TSD -- RCRA non-CORRACTS TSD</b>	EPA	This database lists all treatment, storage and disposal of hazardous material sites that fall under the Resource Conservation and Recovery Act (RCRA). All hazardous waste TSD facilities are required to notify EPA of their existence.	Quarterly	06/07/2013	06/07/2013	06/08/2013	05/09/2013
<b>RCRA GEN -- RCRA Generators</b>	EPA	The EPA regulates all Hazardous Waste Generators subject to the Resource Conservation and Recovery Act (RCRA). They are classified by the quantity of hazardous waste generated. A Small Quantity Generator (SQG) generates between 100kg and 1,000 kg of waste per month. A Large Quantity Generator (LQG) generates over 1,000 kg of waste per month. A Conditionally Exempt SQG (CEG) generates less than 100 kg of waste per month.	Quarterly	06/07/2013	06/07/2013	06/08/2013	05/09/2013
<b>FED BWN -- Federal Brownfields</b>	EPA	A listing of sites that assist the EPA in collecting, tracking, and updating information of sites in relation to the Small Business Liability Relief and Brownfields Revitalization Act. These sites are real property that is either abandoned or underutilized where redevelopment or expansion is complicated by real or perceived environmental contamination.	Quarterly	06/03/2013	06/05/2013	06/06/2013	06/05/2013
<b>FED IC -- Federal Institutional Control</b>	EPA	This is a listing of Brownfield Management System (BMS) sites that have had Institutional Controls (ICs) placed on them. ICs are administrative restrictions, such as legal controls, that help minimize the potential for human exposure to known contamination by ensuring appropriate land or resource use. ICs are meant to supplement Engineering Controls and will rarely be the sole remedy at a site. ICs are a type of Activity and Use Limitation (AUL).	Quarterly	06/03/2013	06/05/2013	06/06/2013	06/05/2013
<b>FED EC -- Federal Engineering Control</b>	EPA	This is a listing of Brownfield Management System (BMS) sites that have had Engineering Controls (ECs) placed on them. ECs are physical methods or modifications put into place on a site to reduce or eliminate the possibility of human exposure to known contamination. ECs are a type of Activity and Use Limitation (AUL).	Quarterly	06/03/2013	06/05/2013	06/06/2013	06/05/2013

# Dataset Descriptions and Sources *Commercial Property*



Dataset	Source	Dataset Description	Update Schedule	Data Requested	Data Obtained	Data Updated	Source Updated
<b>ERNS -- ERNS List</b>	EPA/National Response Center	ERNS is a national database used to store information on unauthorized releases of oil and hazardous substances that have been reported to the National Response Center since 2001. The NRC is the sole federal point of contact for reporting oil and chemical spills. Prior to 2001 this information was maintained by the EPA.	Annually	01/11/2013	01/18/2013	01/18/2013	12/31/2012
<b>ST NPL -- State/Tribal Equivalent NPL</b>	TCEQ	This database contains sites determined by the TCEQ that may constitute an imminent and substantial endangerment to public health and safety or to the environment due to a release or threatened release of hazardous substances into the environment.	Quarterly	05/29/2013	05/30/2013	06/01/2013	05/30/2013
<b>ST CER -- State/Tribal Equivalent CERCLIS</b>	NA	This database is not currently available from this state. If this state does make this database available in the future, Banks Environmental Data will obtain it for reporting purposes.	NA	N/A	N/A	N/A	N/A
<b>SWLF -- State/Tribal Disposal or Landfill</b>	TCEQ	The SWLF database contains records of municipal solid waste facilities that may accept various types of municipal solid waste for processing or disposal, depending on the type of facility. A Municipal Solid Waste facility may also accept certain special wastes and non-hazardous industrial solid wastes if approved by the TCEQ executive director.	Quarterly	05/16/2013	05/20/2013	06/01/2013	05/16/2013
<b>SWLF -- State/Tribal Disposal or Landfill</b>	TCEQ	This database is a listing of closed and abandoned municipal solid waste landfills. The sites included are either unauthorized (UNUM_) or permitted (PERMAPP_).	NA	N/A	N/A	N/A	N/A
<b>LPST -- State/Tribal Leaking Storage Tank</b>	TCEQ	This database contains information on leaking storage tanks, equipment failures, compliance, and releases in the state.	Quarterly	06/05/2013	06/05/2013	06/05/2013	06/05/2013
<b>LPST -- State/Tribal Leaking Storage Tank</b>	EPA	The Tribal LUST database (maintained by EPA Region 6) provides information on leaking underground storage tank on tribal lands in Louisiana, Arkansas, Oklahoma, New Mexico and Tribal Nations.	Quarterly	05/03/2013	05/10/2013	05/11/2013	05/10/2013
<b>PST -- State/Tribal Storage Tank</b>	TCEQ	This database contains information on above and underground storage tanks, compliance, and releases in the state.	Quarterly	06/03/2013	06/03/2013	06/03/2013	05/31/2013
<b>PST -- State/Tribal Storage Tank</b>	EPA	The Tribal UST database (maintained by EPA Region 6) provides underground storage tank information on tribal lands in Louisiana, Arkansas, Oklahoma, New Mexico and Tribal Nations.	Quarterly	05/03/2013	05/06/2013	05/06/2013	05/06/2013
<b>ST IC -- State/Tribal Institutional Control</b>	TCEQ	This database includes Voluntary Cleanup Program (VCP) or Innocent Operator Program (IOP) sites that have been remediated and have had Institutional Controls (ICs) placed on them. ICs are administrative restrictions, such as legal controls, that help minimize the potential for human exposure to known contamination by ensuring appropriate land or resource use.	Quarterly	05/23/2013	06/24/2013	06/24/2013	05/10/2013
<b>ST IC -- State/Tribal Institutional Control</b>	RRC	The Railroad Commission of Texas Voluntary Cleanup Program provides an incentive to remediate Oil & Gas related pollution by participants as long as they did not cause or contribute to the contamination.	Quarterly	05/23/2013	06/24/2013	06/24/2013	06/24/2013
<b>ST EC -- State/Tribal Engineering Control</b>	TCEQ	This database includes Voluntary Cleanup Program (VCP) or Innocent Operator Program (IOP) sites that have been remediated and have had Engineering Controls (ECs) placed on them. ECs are physical methods or modifications put into place on a site to reduce or eliminate the possibility of human exposure to known contamination.	Quarterly	05/23/2013	06/24/2013	06/24/2013	05/10/2013

# Dataset Descriptions and Sources *Commercial Property*



Dataset	Source	Dataset Description	Update Schedule	Data Requested	Data Obtained	Data Updated	Source Updated
VCP -- State/Tribal Voluntary Cleanup	TCEQ	This database contains sites from both the Voluntary Cleanup Program (VCP) and the Innocent Operator Program (IOP). The VCP records contain information on contaminated sites that private parties have cleaned up through assistance from the State in the form of administrative, technical, and legal incentives. The IOP records are sites that have received certificates from the State acknowledging that their property is contaminated as a result of a release or migration of contaminants from a source or sources not located on the property, and they did not cause or contribute to the source or sources of contamination.	Quarterly	05/23/2013	06/24/2013	06/24/2013	05/10/2013
VCP -- State/Tribal Voluntary Cleanup	RRC	The Railroad Commission of Texas Voluntary Cleanup Program provides an incentive to remediate Oil & Gas related pollution by participants as long as they did not cause or contribute to the contamination.	Quarterly	05/23/2013	06/24/2013	06/24/2013	06/24/2013
ST BWN -- State/Tribal Brownfield	TCEQ	Brownfield sites are former industrial properties that lie dormant or underutilized due to liability associated with real or perceived contamination. In Texas, the TCEQ, in close partnership with the EPA and other federal, state, and local redevelopment agencies, and stakeholders, is facilitating cleanup, transferability, and revitalization of Brownfield's through the development of regulatory, tax, and technical assistance tools.	Quarterly	06/24/2013	06/24/2013	06/24/2013	03/11/2013
ST BWN -- State/Tribal Brownfield	RRC	The Railroad Commission of Texas' Voluntary Cleanup Program (RRC-VCP) provides an incentive to remediate Oil & Gas related pollution by participants as long as they did not cause or contribute to the contamination. Applicants to the program receive a release of liability to the state in exchange for a successful cleanup.	Quarterly	05/24/2013	06/24/2013	06/24/2013	06/24/2013
HW -- State/Tribal Hazardous Waste	TCEQ	This database contains information on facilities which store, process, or dispose of hazardous waste as maintained by the Industrial and Hazardous Waste Permits section of the TCEQ.	Quarterly	06/03/2013	06/03/2013	06/03/2013	05/03/2013
RCRA -- RCRA	EPA	This database lists all sites that fall under the Resource Conservation and Recovery Act (RCRA) and are not classifiable as treatment, storage, disposers of hazardous material, hazardous waste generator or subject to corrective action activity.	Quarterly	06/07/2013	06/07/2013	06/08/2013	05/09/2013
DRYC -- Dry Cleaners	TCEQ	Dry Cleaner data houses both the DCRP Program information and PERC information released by the TCEQ. The DCRP database contains records funded for state-lead clean up of dry cleaner related contaminated sites. The DCRP administers the Dry Cleaning Facility Release Fund to assist with remediation of contamination caused by dry cleaning solvents. There are two listings from this program: LIST#1 - A historic listing of any facility that registered with the DCRP indicating whether or not the facility has used Perchloroethylene (PERC) in the past. LIST#2 - A Prioritization list of dry cleaner sites Facilities on this list will be investigated in order to determine the existence and or extent of possible contamination. Facilities which are not current on their DCRP payments get dropped from the program. Banks Environmental Data DOES NOT REMOVE these listings from our database so that we may present a more complete historical listing of facilities that may or may not have used PERC in the past.	Quarterly	05/30/2013	06/13/2013	06/13/2013	05/30/2012



**Disclaimer** *Commercial Property*

The Banks Environmental Data Regulatory Database Report was prepared based upon data obtained from State, Tribal, and Federal sources known to Banks Environmental Data at the time the data was obtained. Great care has been taken by Banks in obtaining the best available data from the best available sources. However, there is a possibility that there are sources of data applicable or pertaining to this report's target property, and/or surrounding properties, to which Banks does not have access or has not accessed. Furthermore, although Banks Environmental Data performs quality assurance and quality control on all data, including data it obtains, Banks recognizes that inaccuracies in data from these sources may, and do, exist; accordingly, inaccurate data may have been used or relied upon in the preparation of this report. Even though Banks Environmental Data performs a thorough and diligent search to locate and fix any inaccuracies in the data relied upon in the preparation of this report and this report, Banks cannot guarantee or warrant the accuracy of the locations, information, data, or report. The purchaser of this report accepts this report "as is" and assumes all risk related to any potential inaccuracy contained in the report or not reported in it, whether due to a reliance by Banks Environmental Data on inaccurate data, or for any other reason [including but not limited to the negligence or express negligence of Banks Environmental Data]. If this report is being used for the Records Review section of a Phase I Site Assessment according to the ASTM 1527-05, for EPA's All Appropriate Inquiry, or for any other purpose (public or private), all liability and responsibility is assumed by the Environmental Professional or other individual or entity acquiring the report.